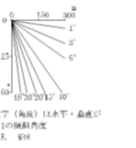
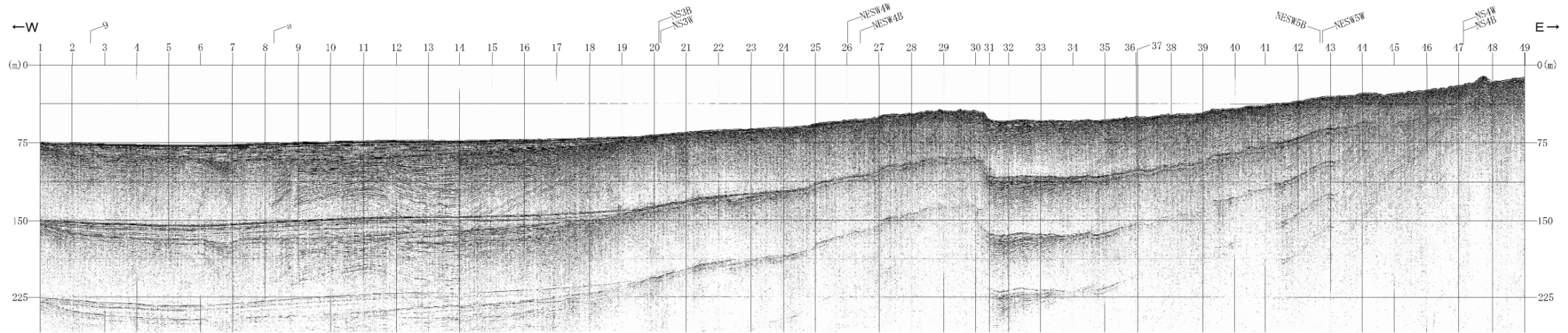
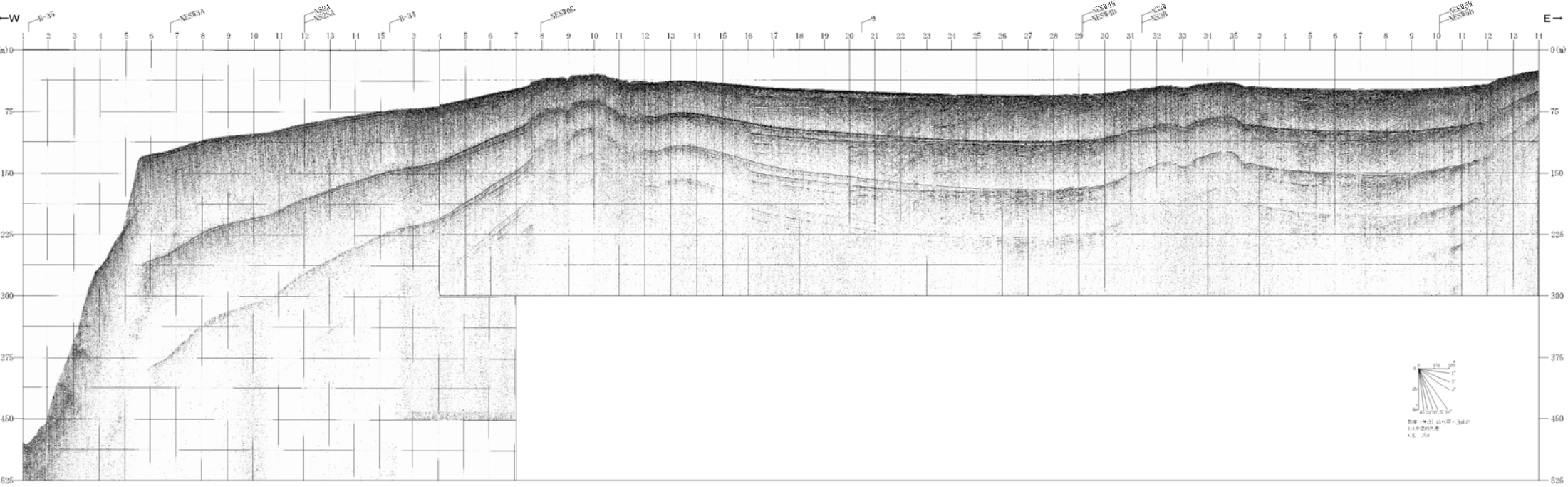


4. ブーマーマルチチャンネル音波探査

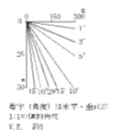
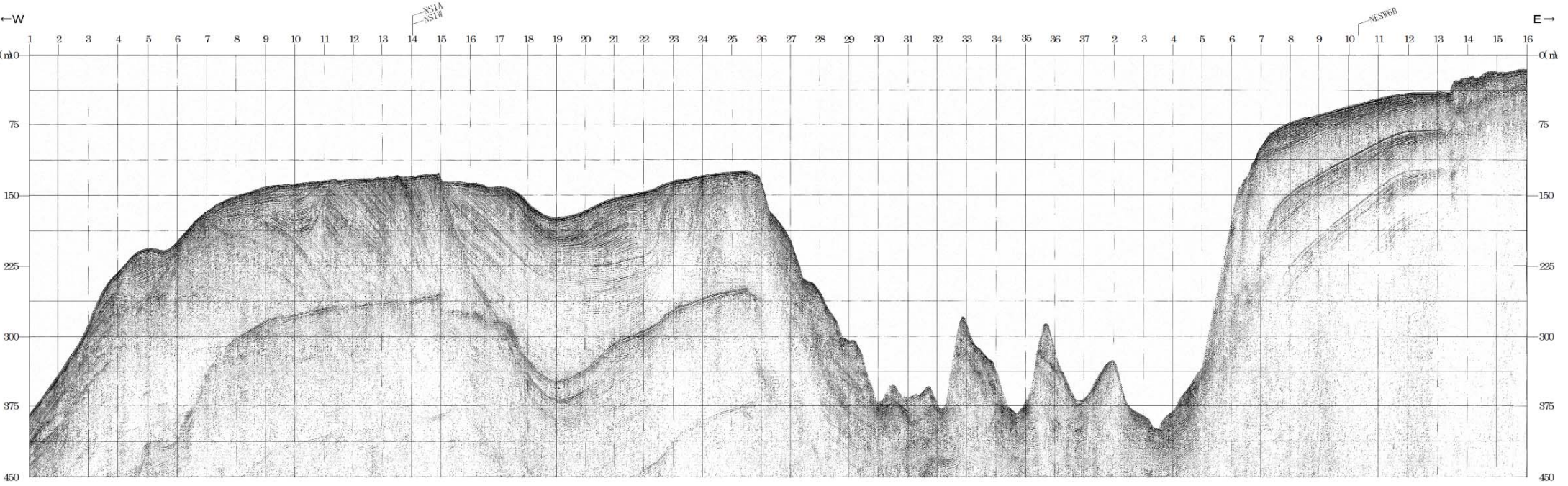
測線EW3B



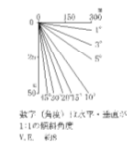
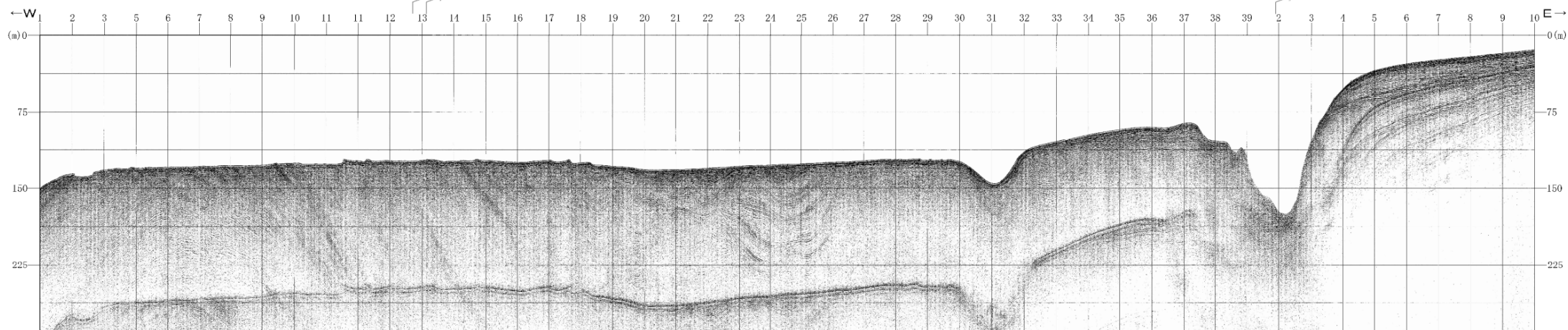
測線 F.W 4 B



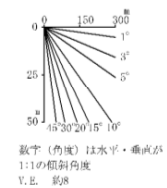
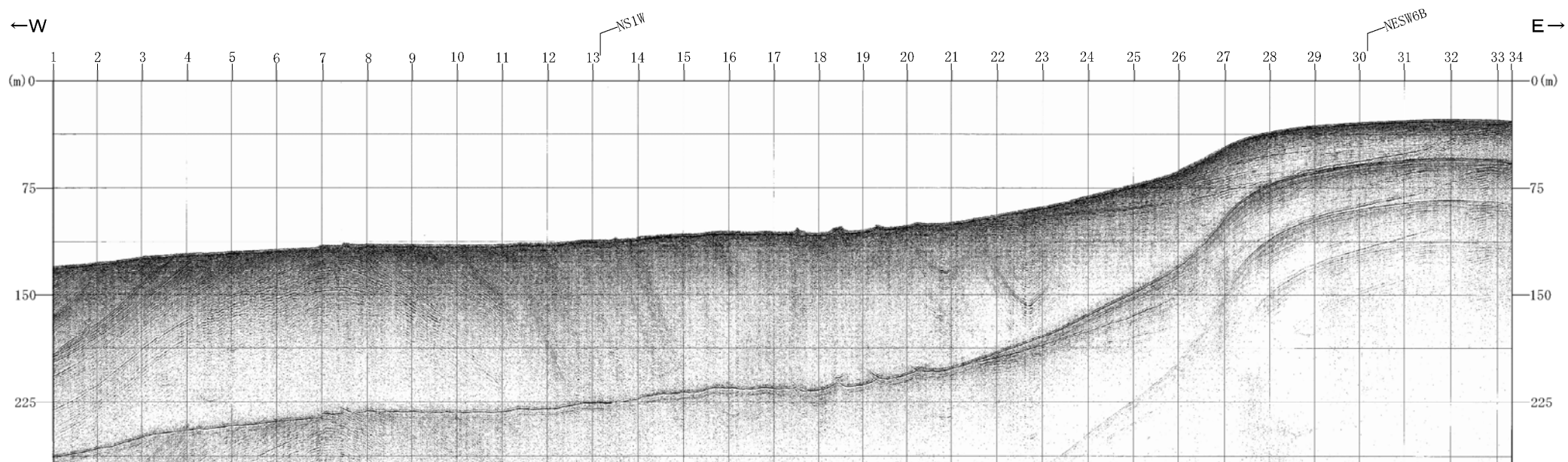
測線EW7B



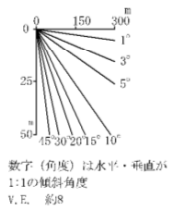
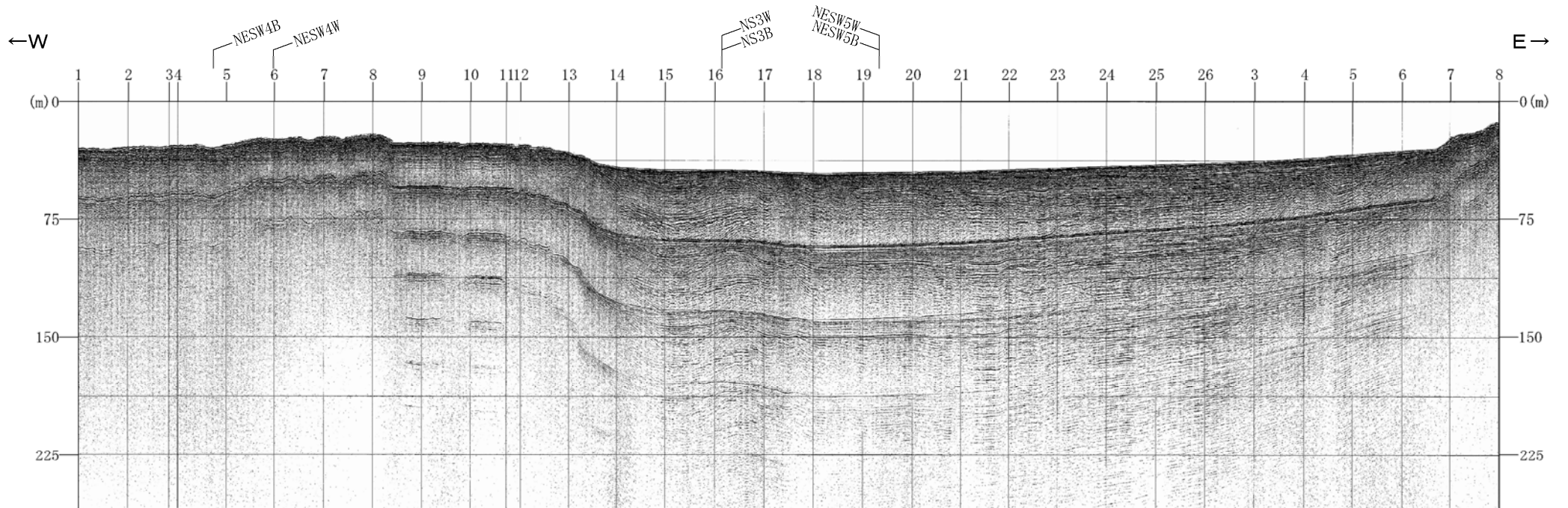
測線FW8B



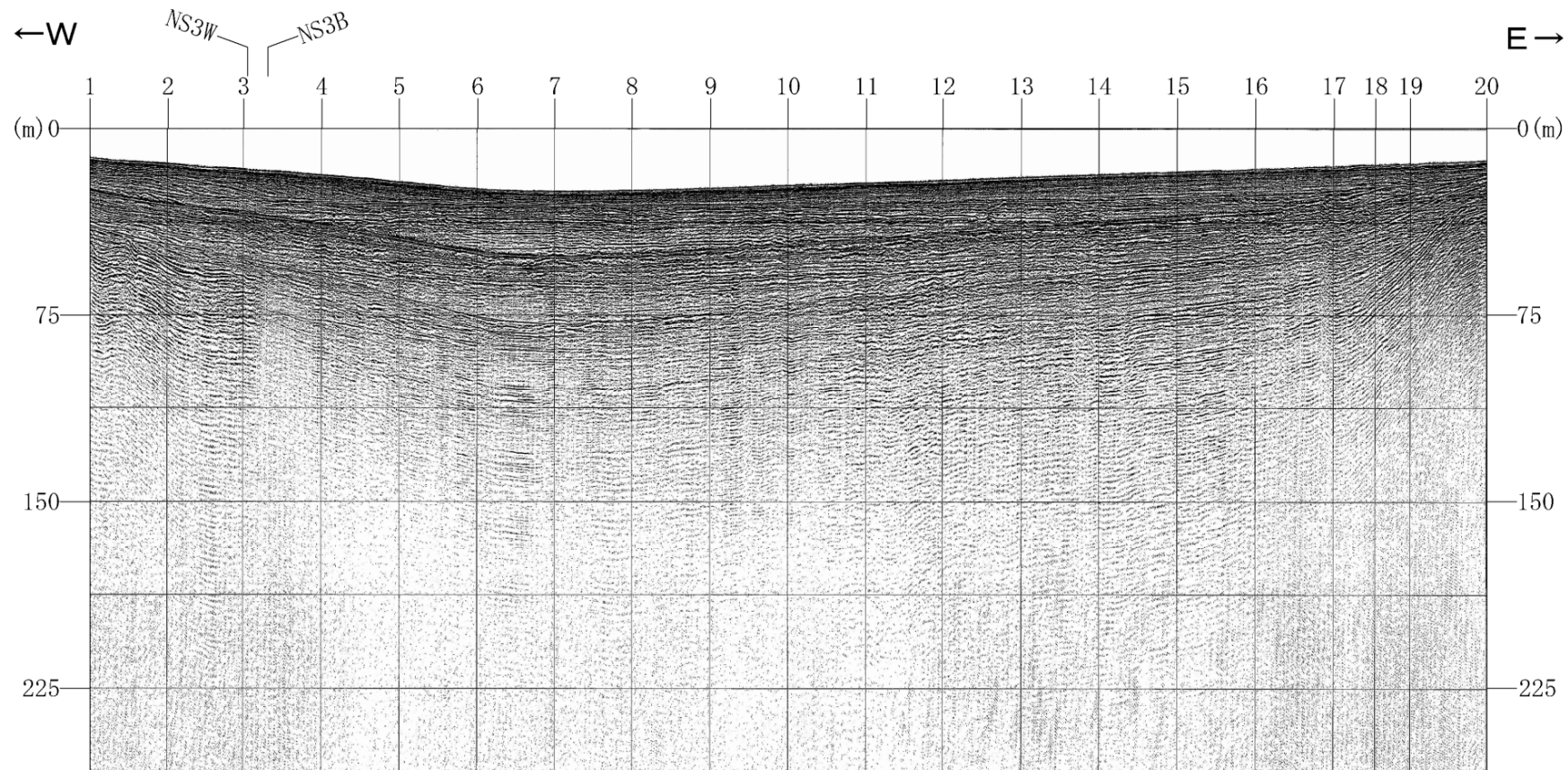
測線EW9B



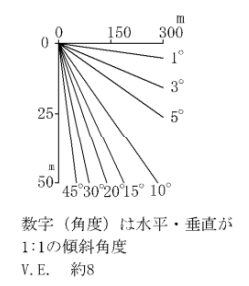
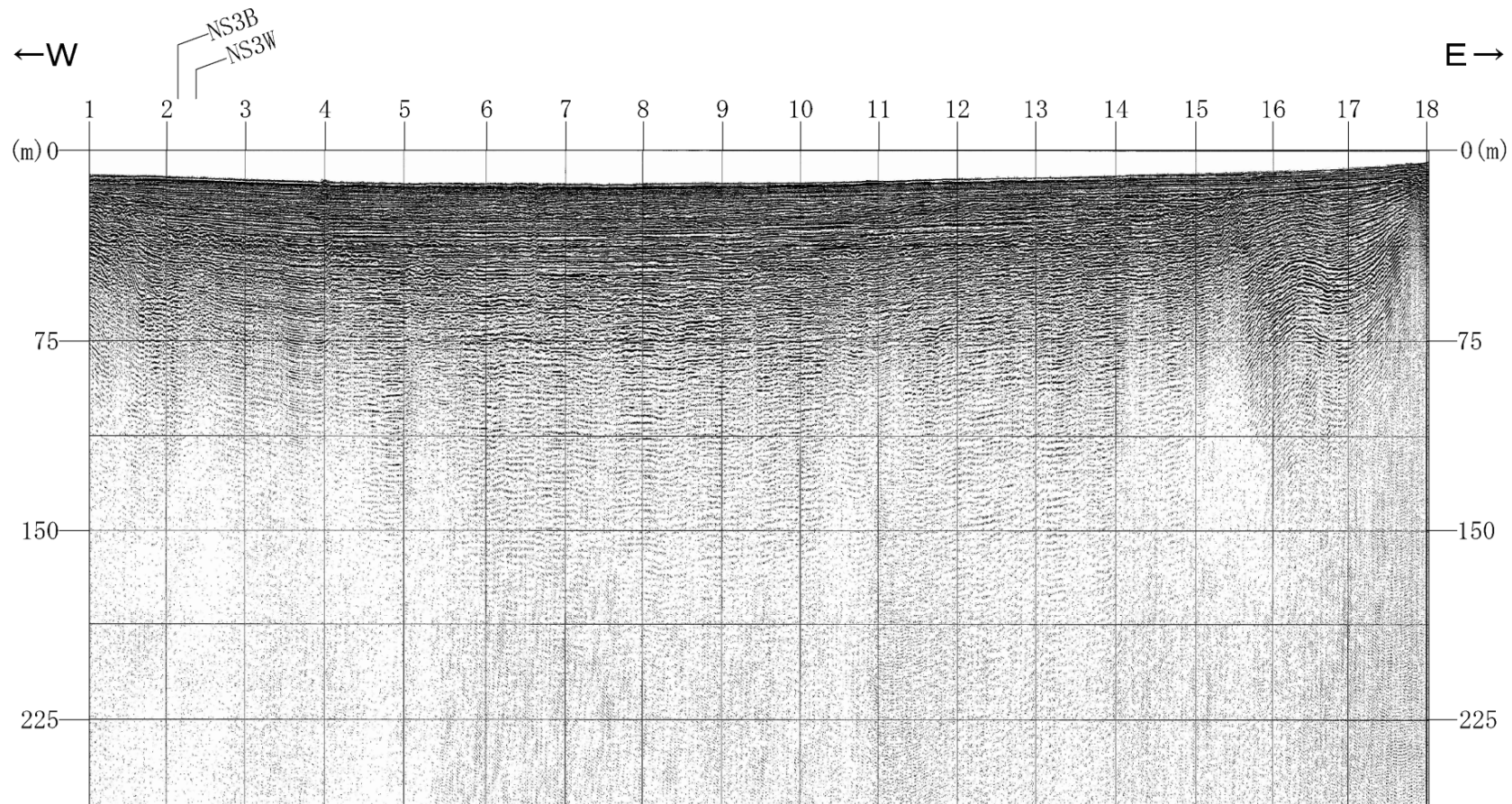
測線EW10B



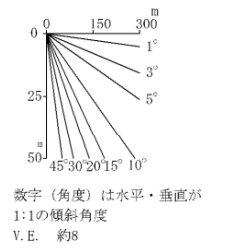
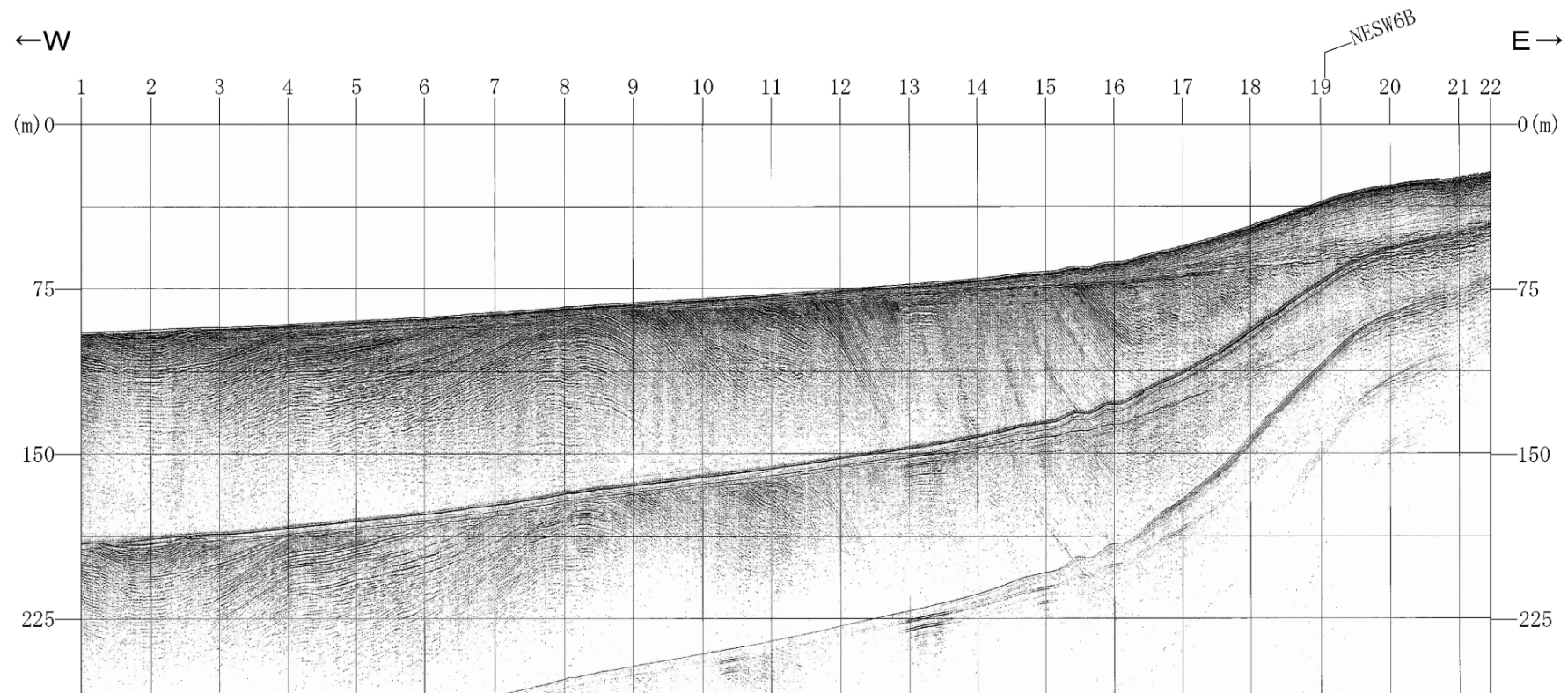
測線EW11B



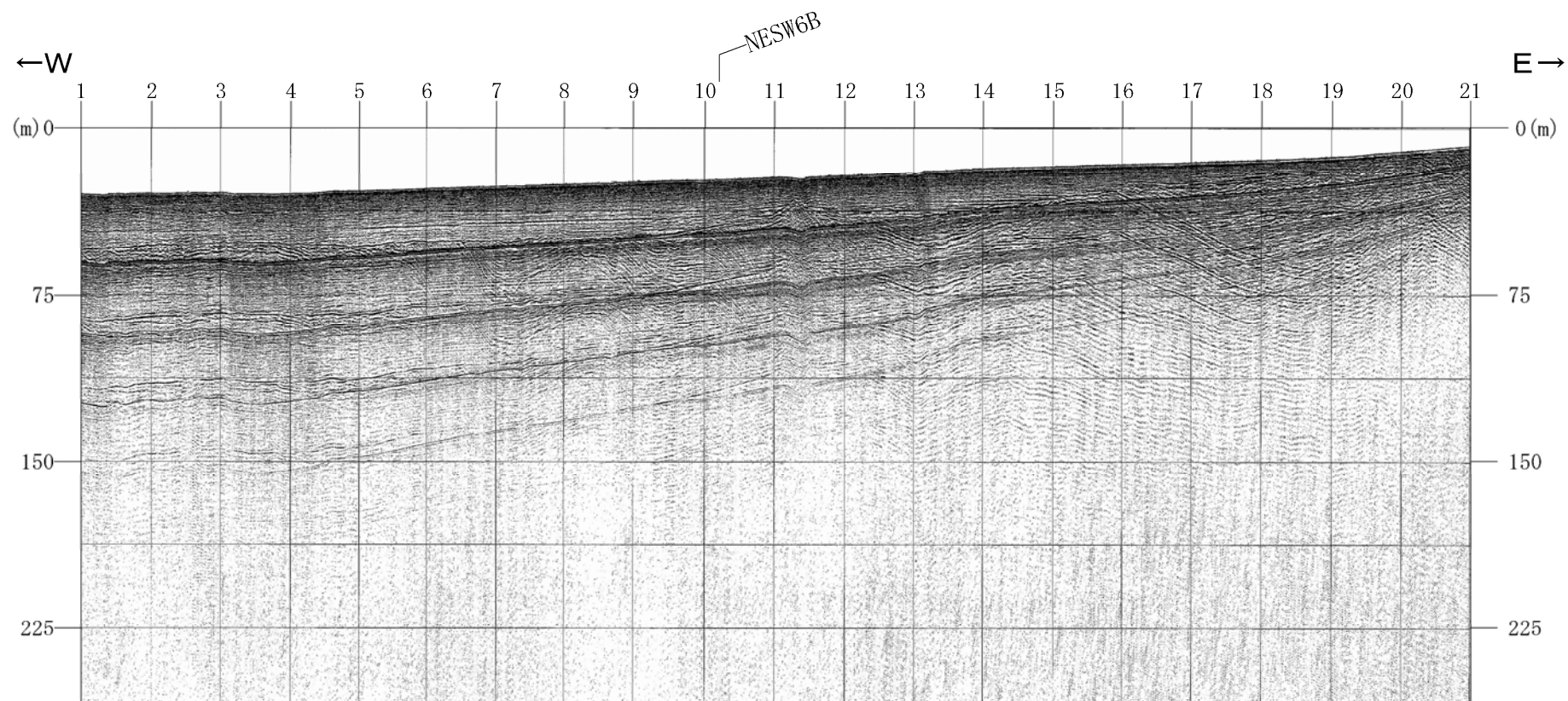
測線EW12B



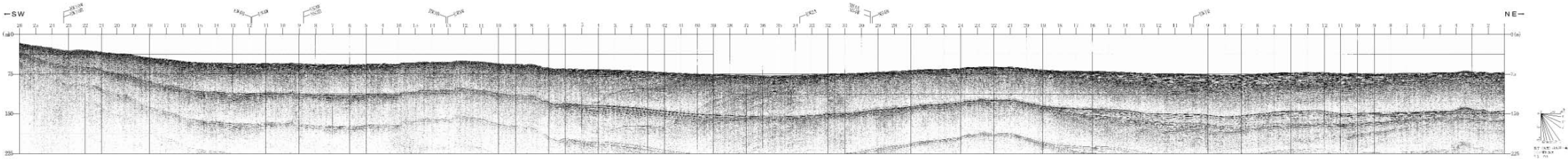
測線EW13B



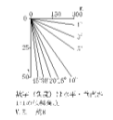
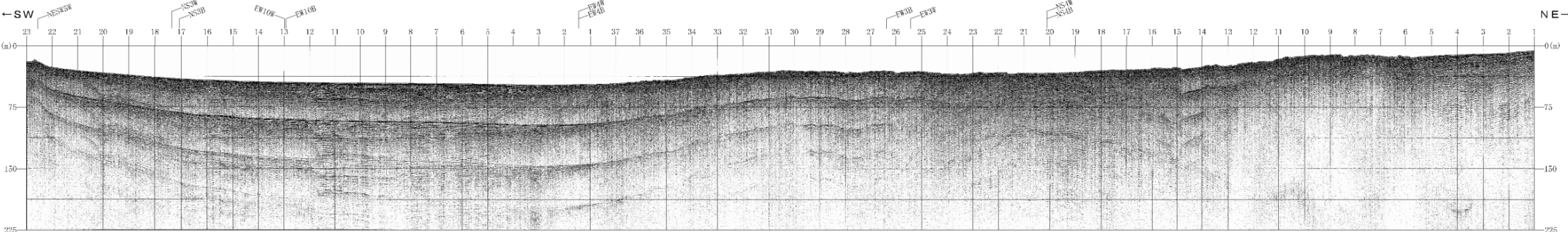
測線 EW 1 4 B

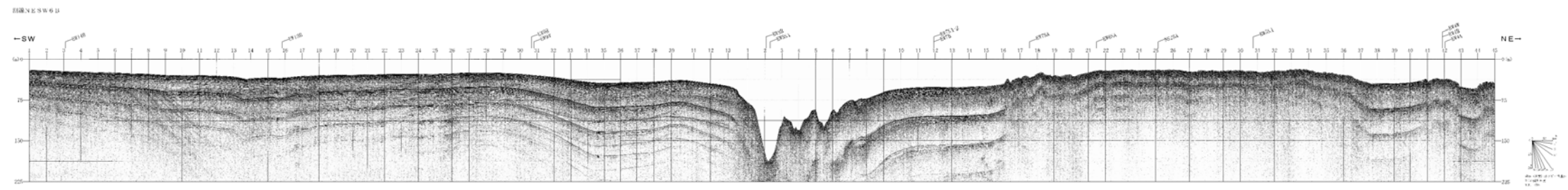


圖幅 N1:SW111

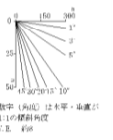
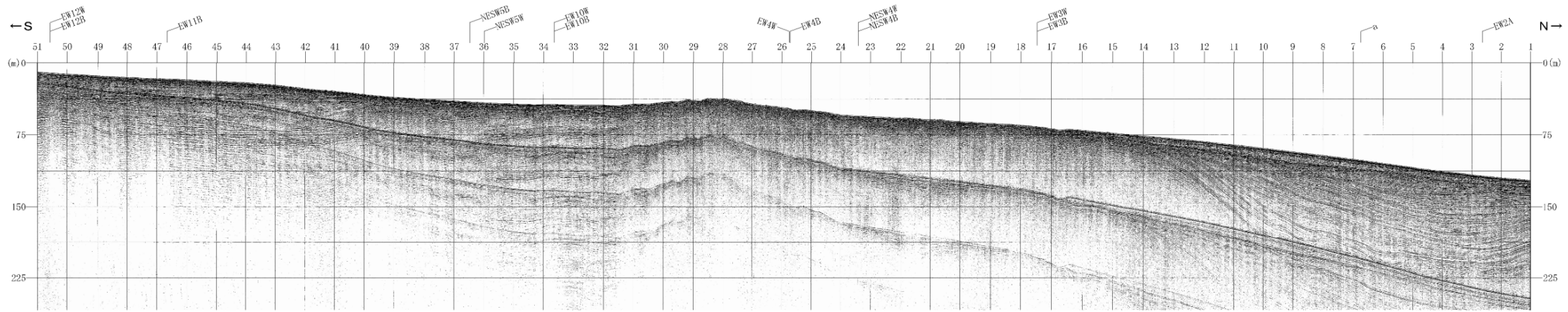


測線NE SW 5 B

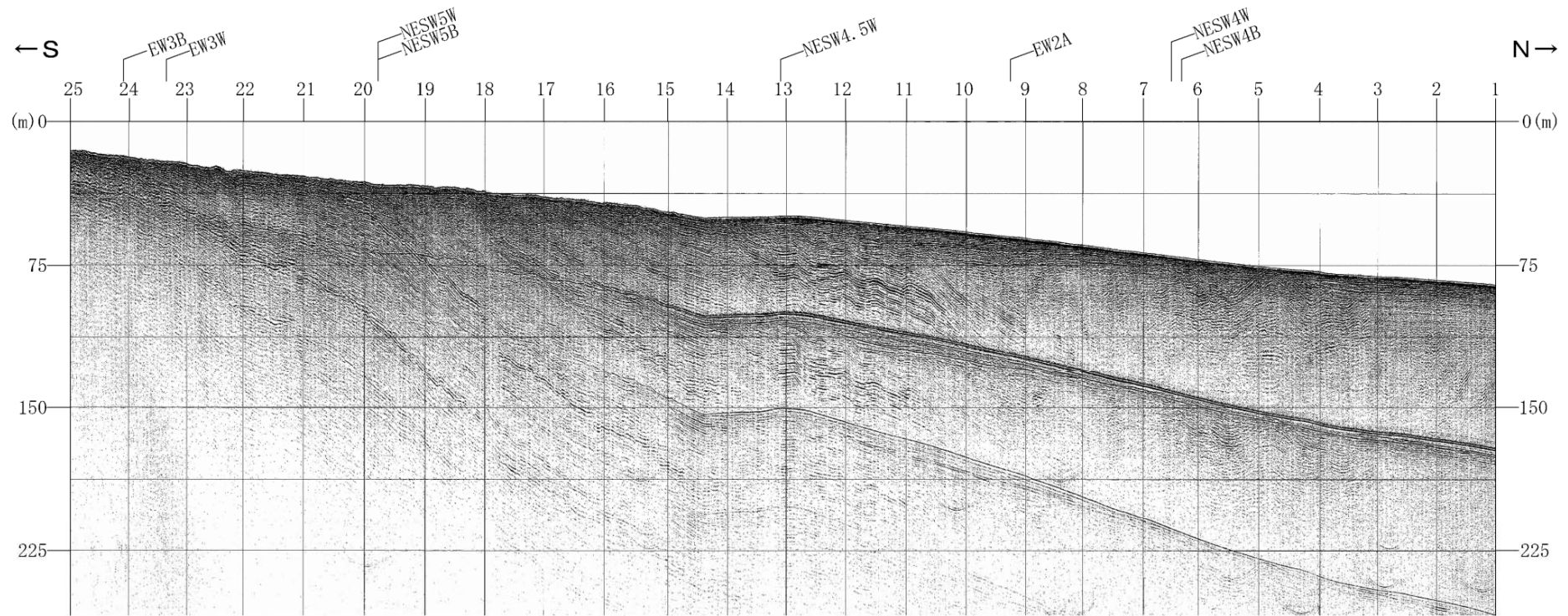




測線NS3B

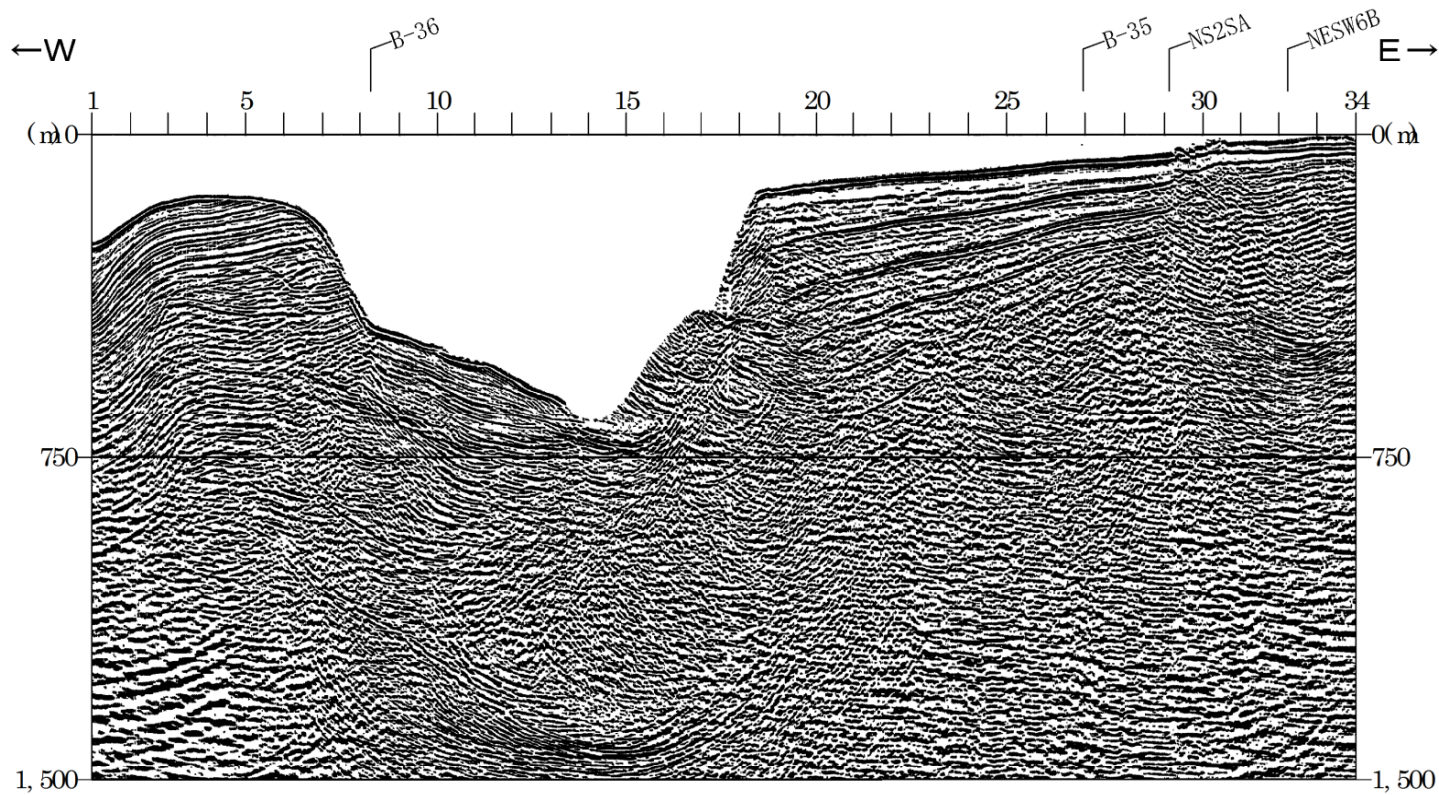


測線 NS 4 B

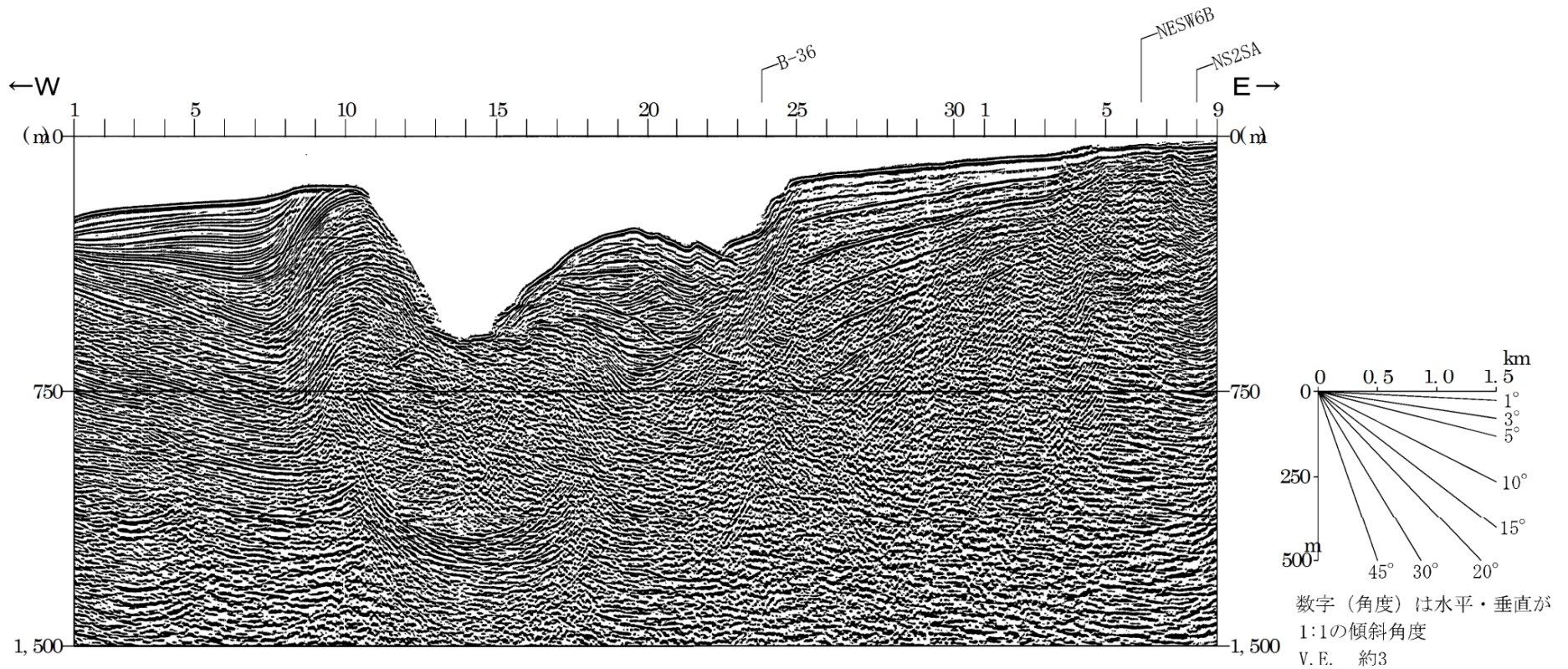


5. エアガンショートマルチチャンネル音波探査

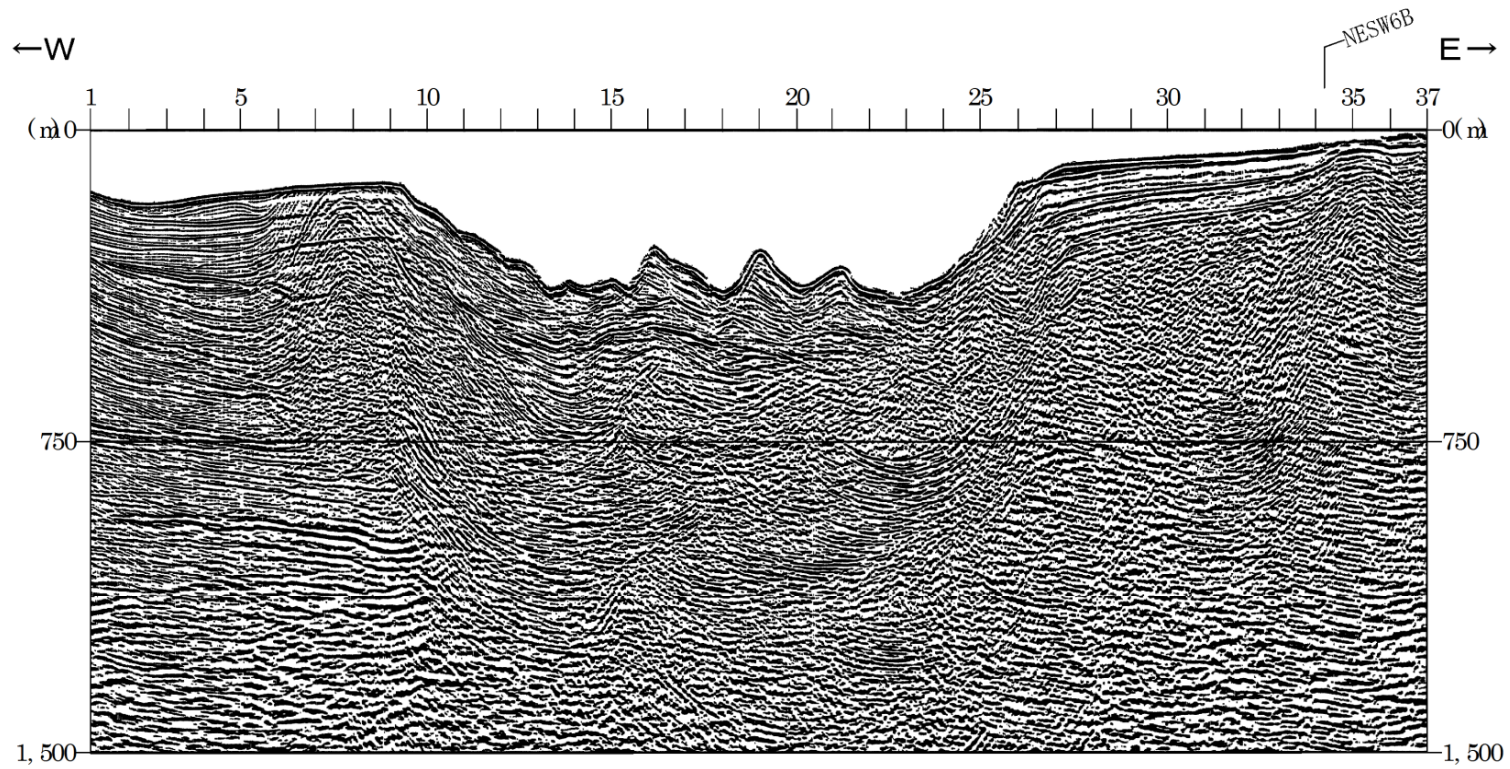
測線EW5SA



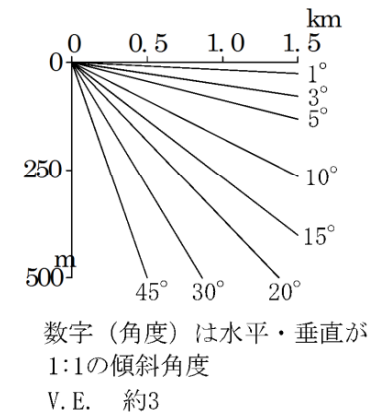
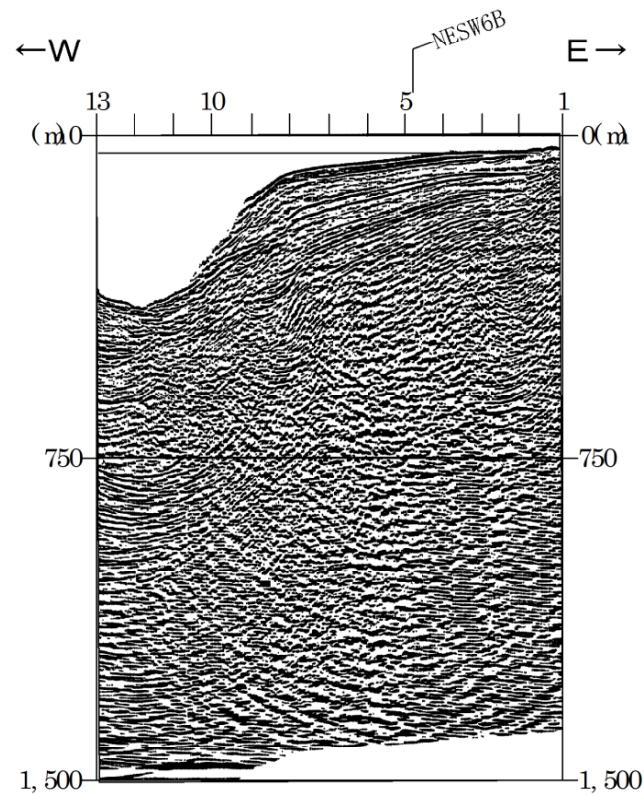
測線EW6SA



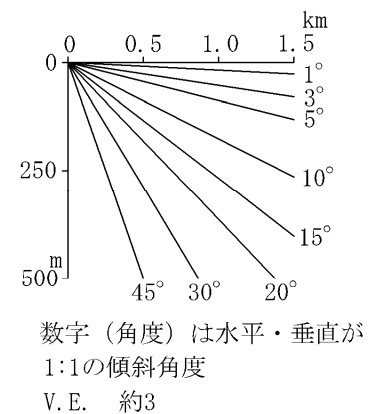
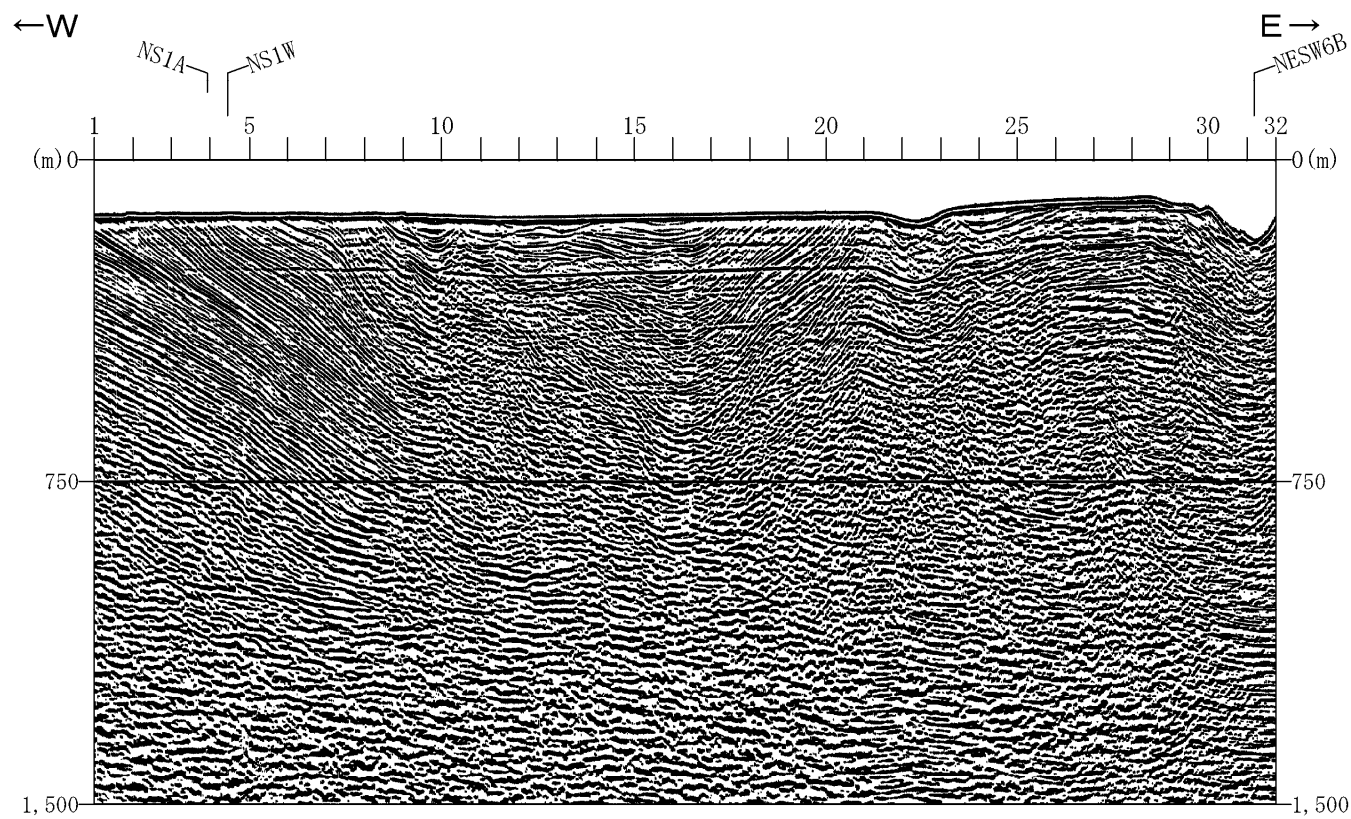
測線EW7SA



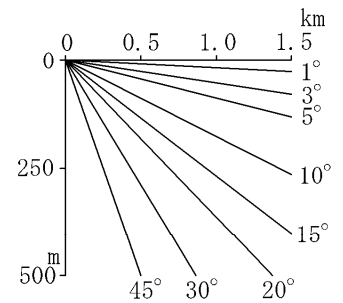
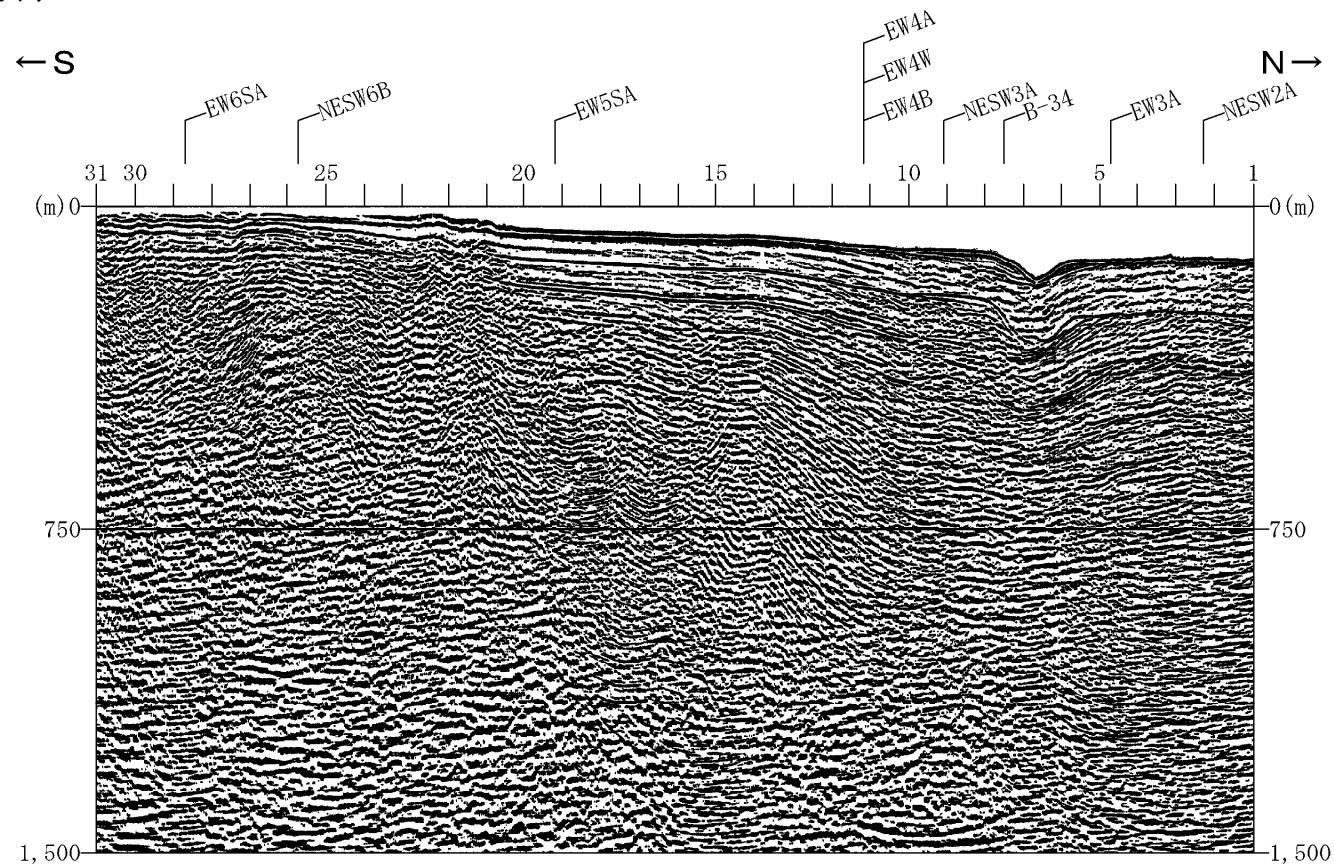
測線EW7SA-2



測線EW8SA



測線NS2SA



数字（角度）は水平・垂直が
1:1の傾斜角度
V.E. 約3