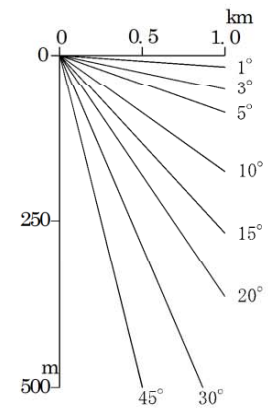
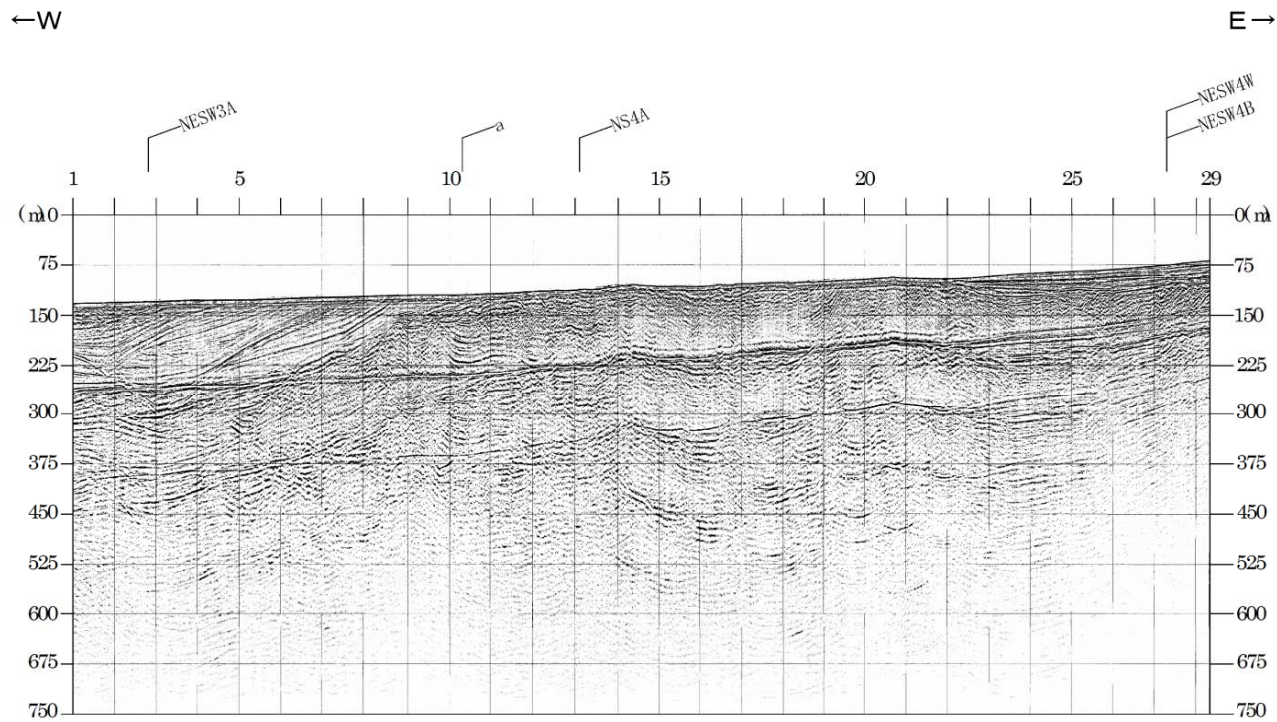


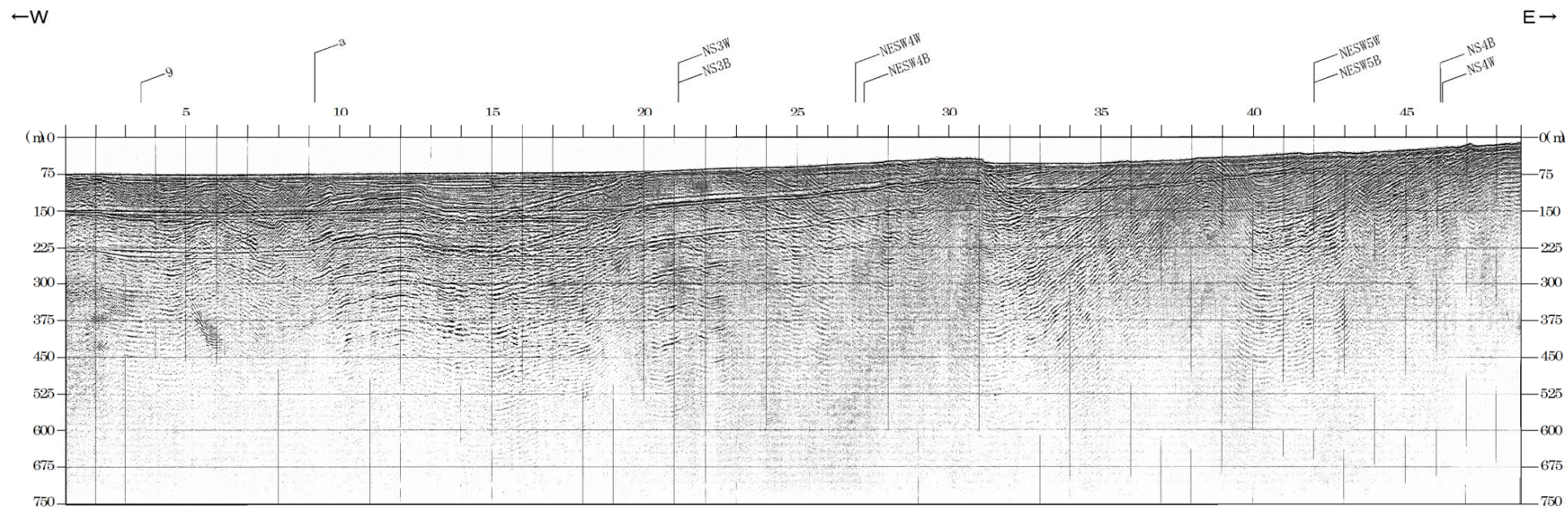
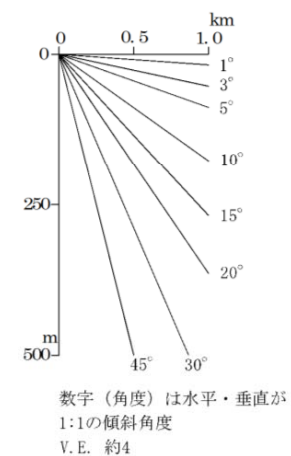
3. ウォーターガンマルチチャンネル音波探査

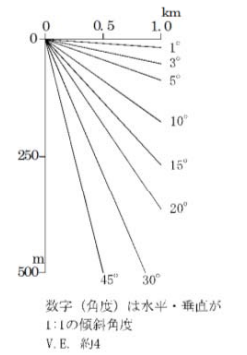
測線 E W 1 W



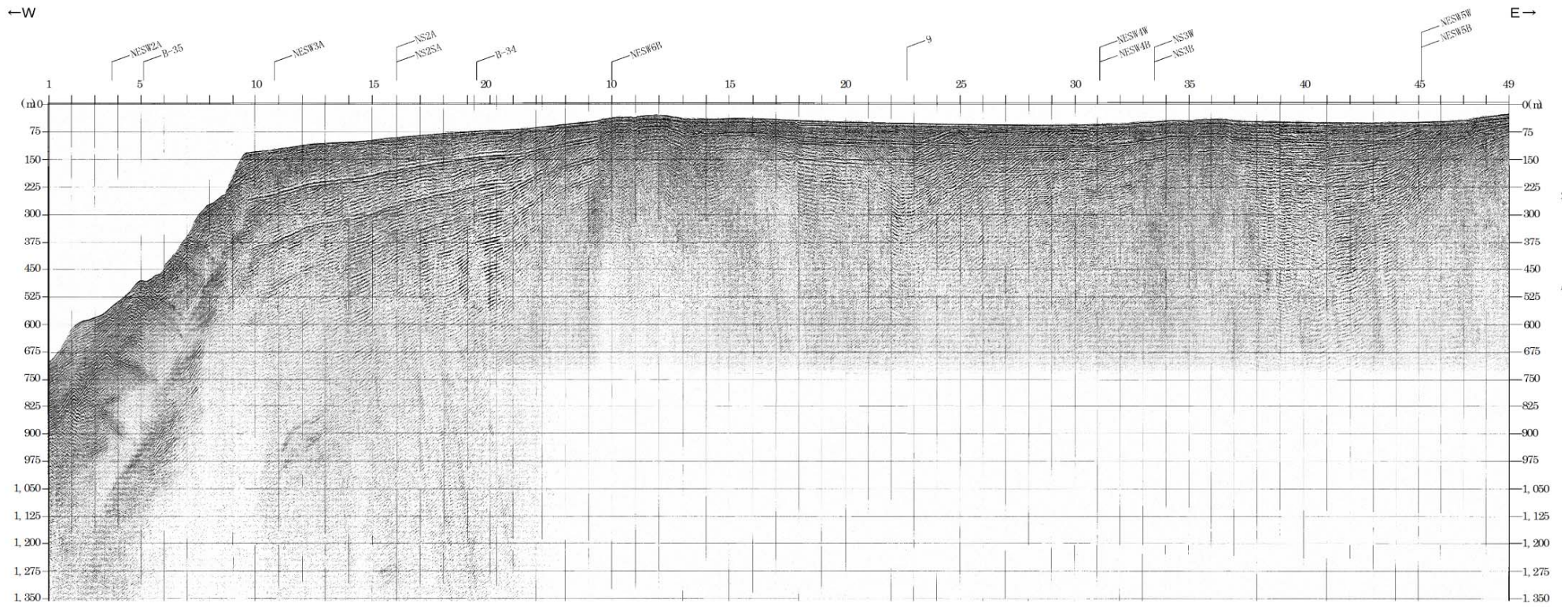
数字 (角度) は水平・垂直が
1:1の傾斜角度
V.E. 約4

測線EW3W

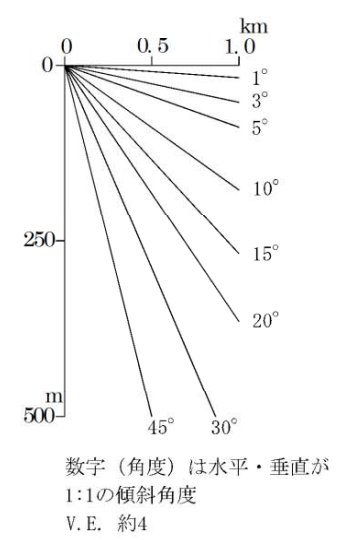
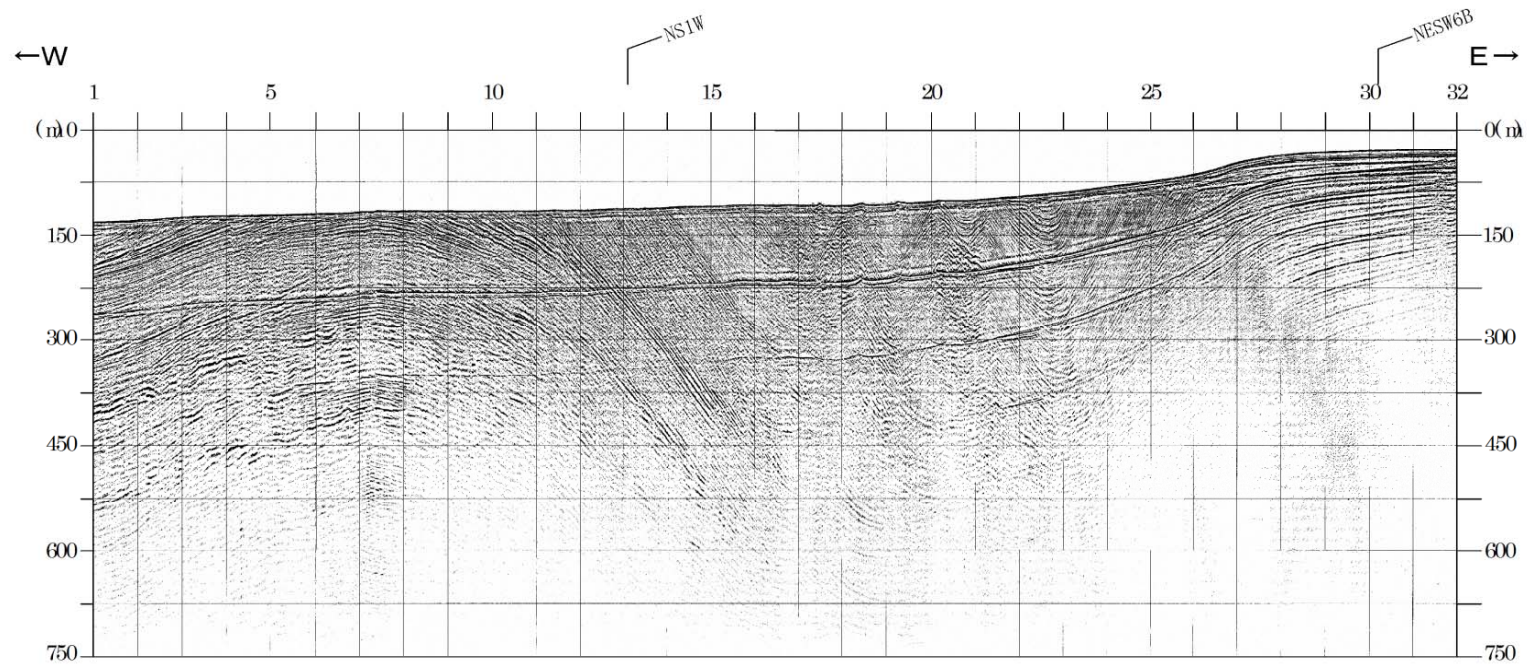




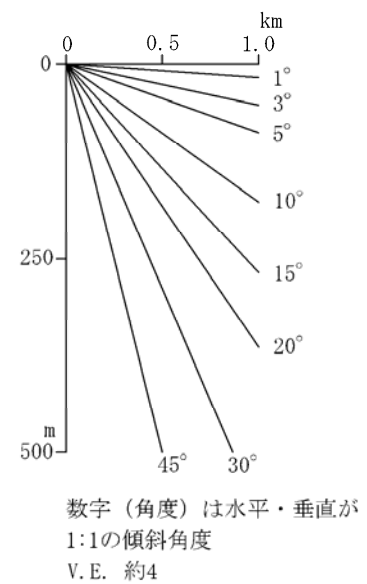
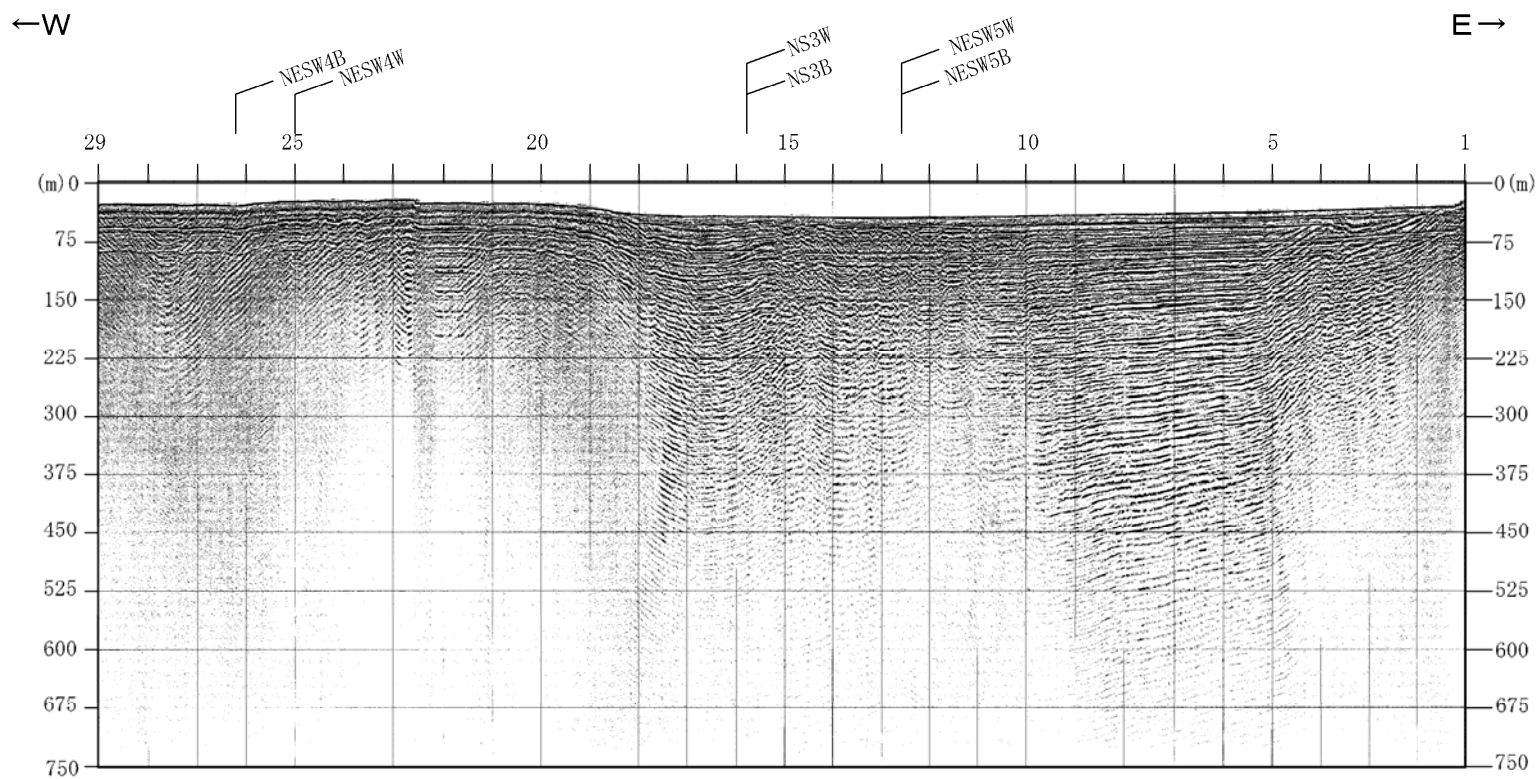
測線 E W 4 W



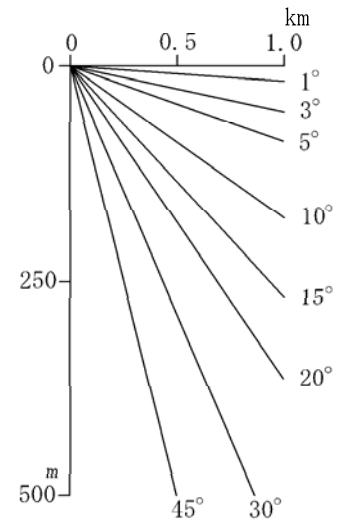
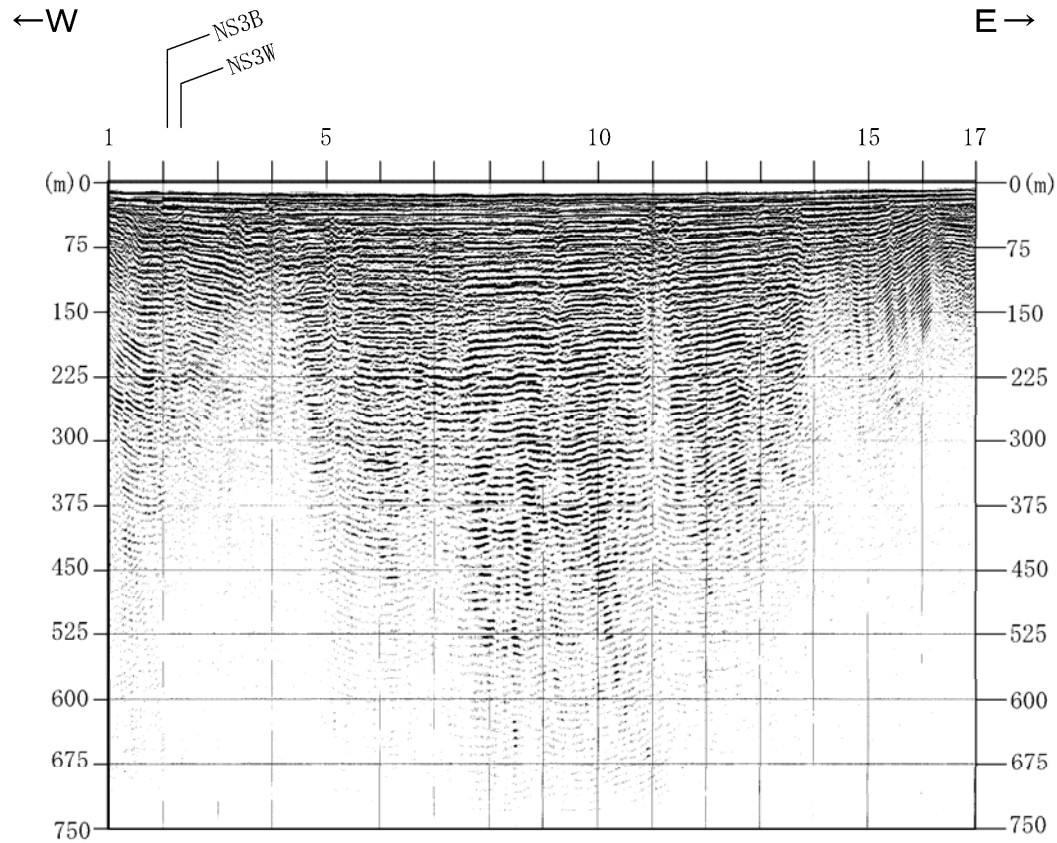
測線EW9W



測線EW10W

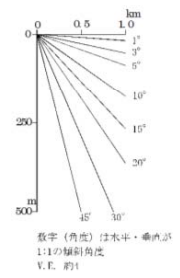
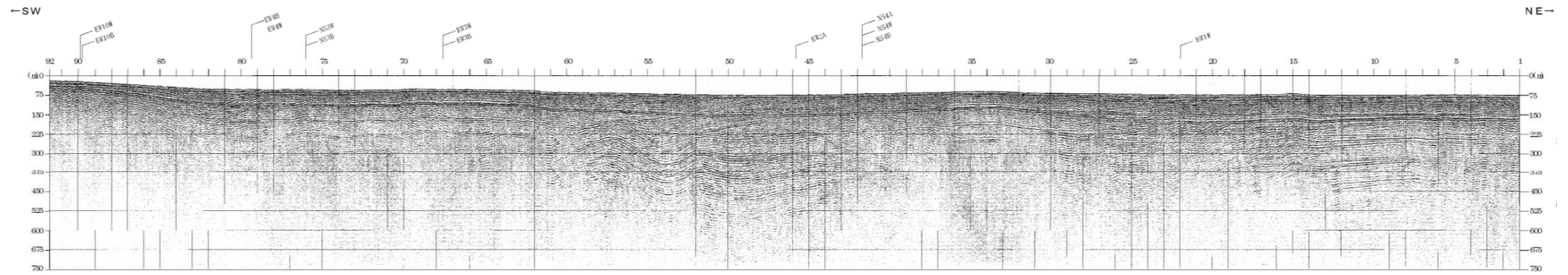


測線EW12W



数字（角度）は水平・垂直が
1:1の傾斜角度
V.E. 約4

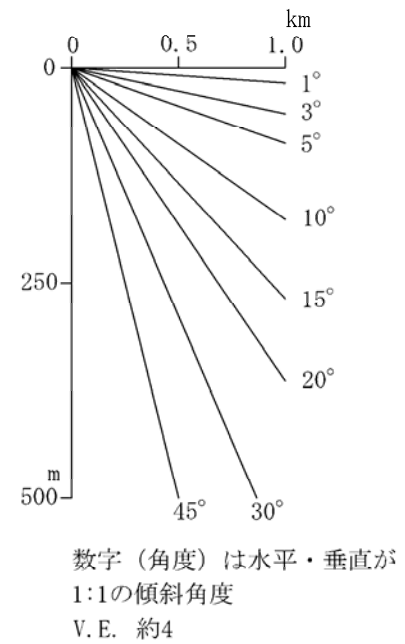
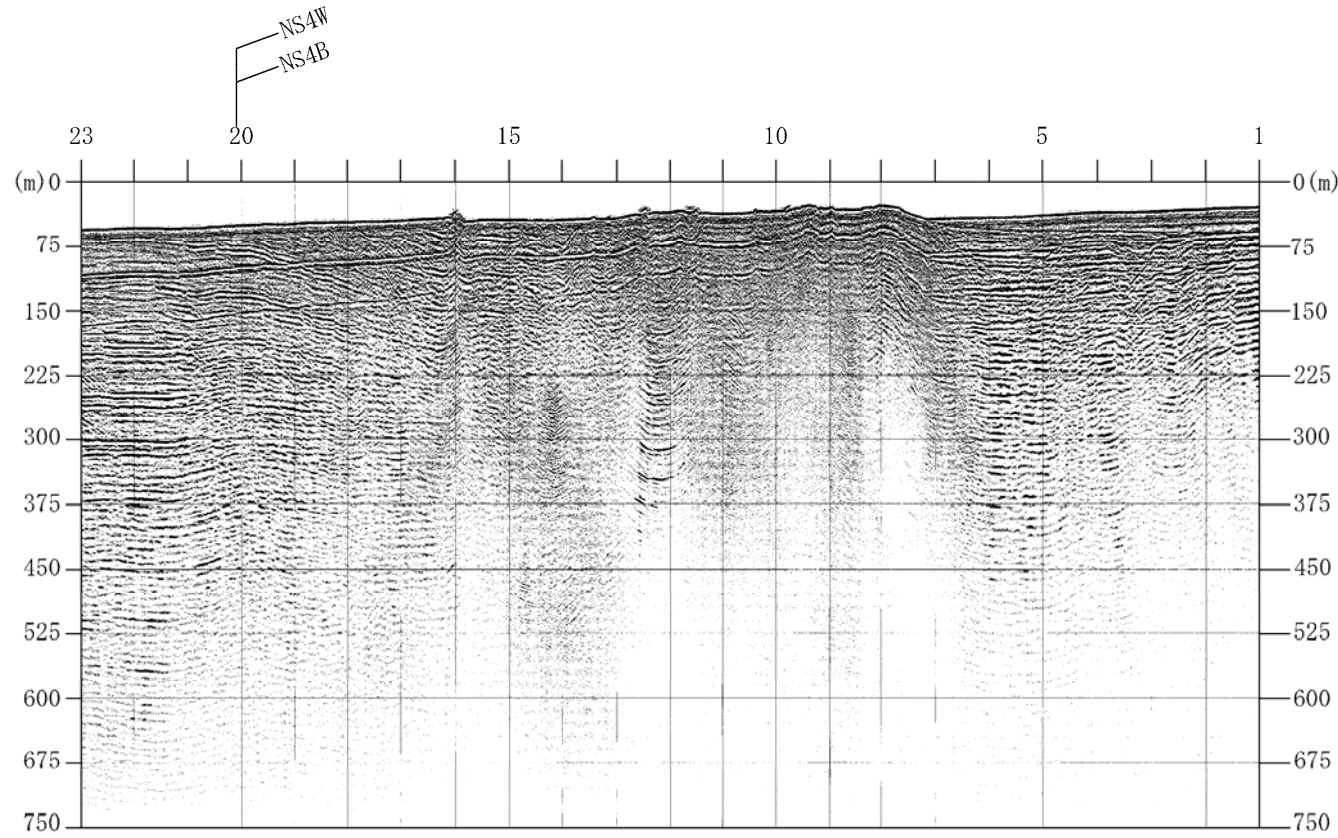
測線NE SW 4 W



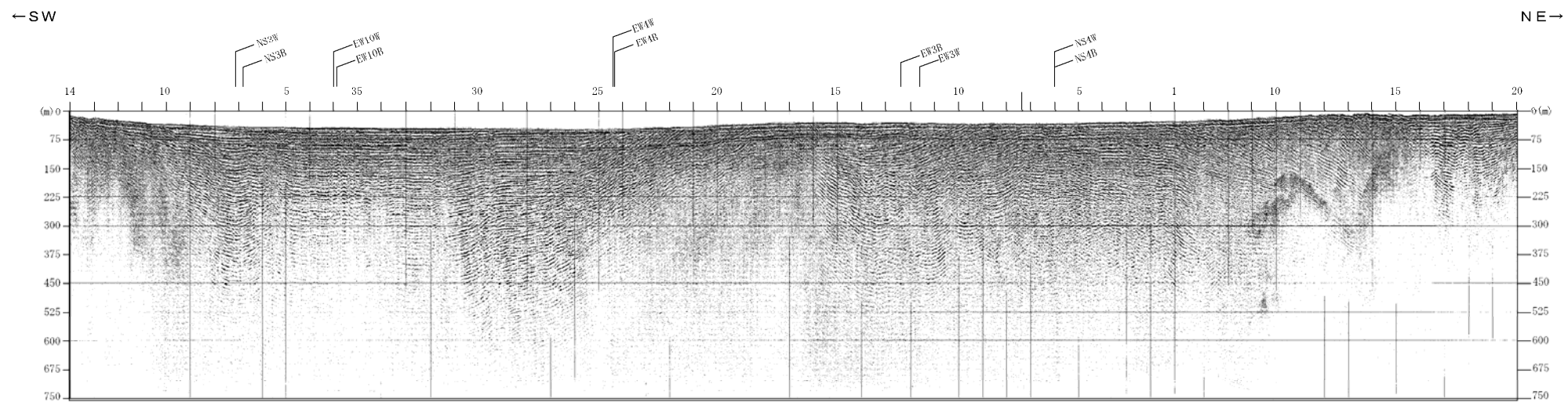
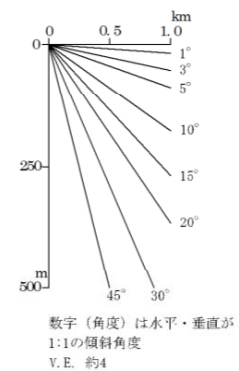
測線NE SW 4. 5 W

← SW

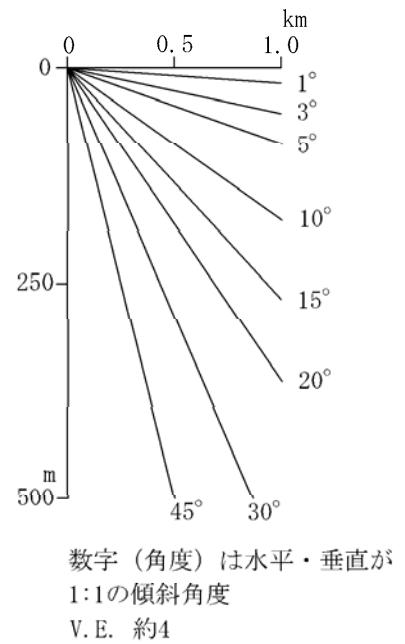
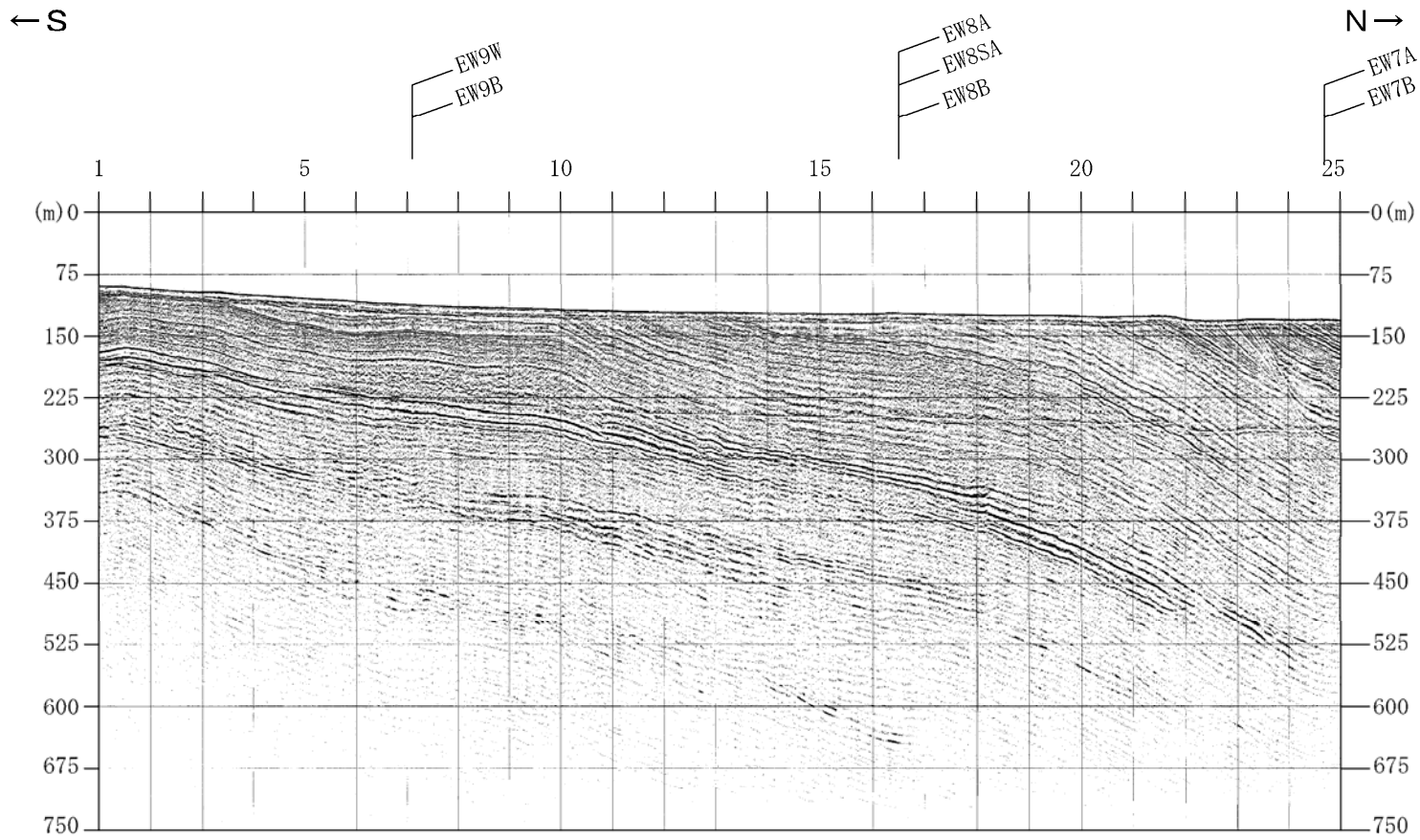
NE →



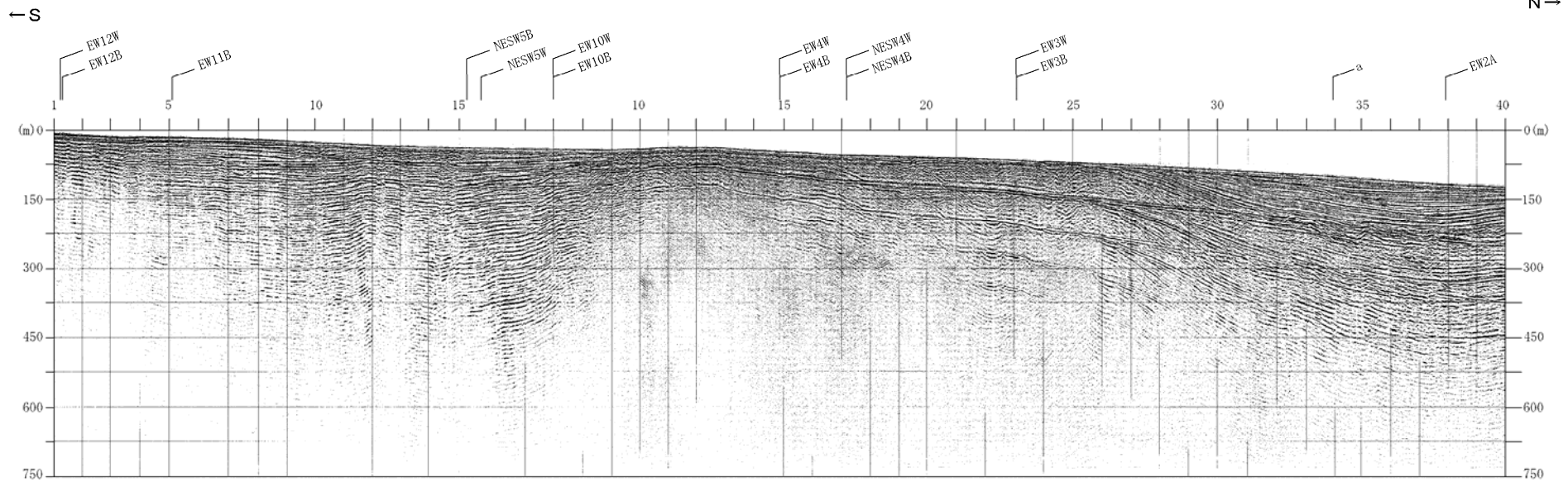
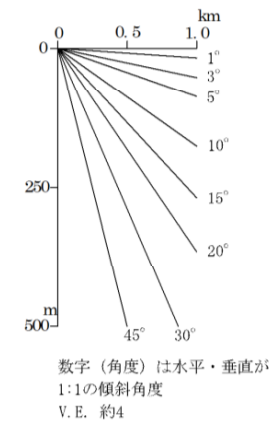
測線NE SW 5 W



測線NS1W



測線NS 3 W



測線N S 4 W

