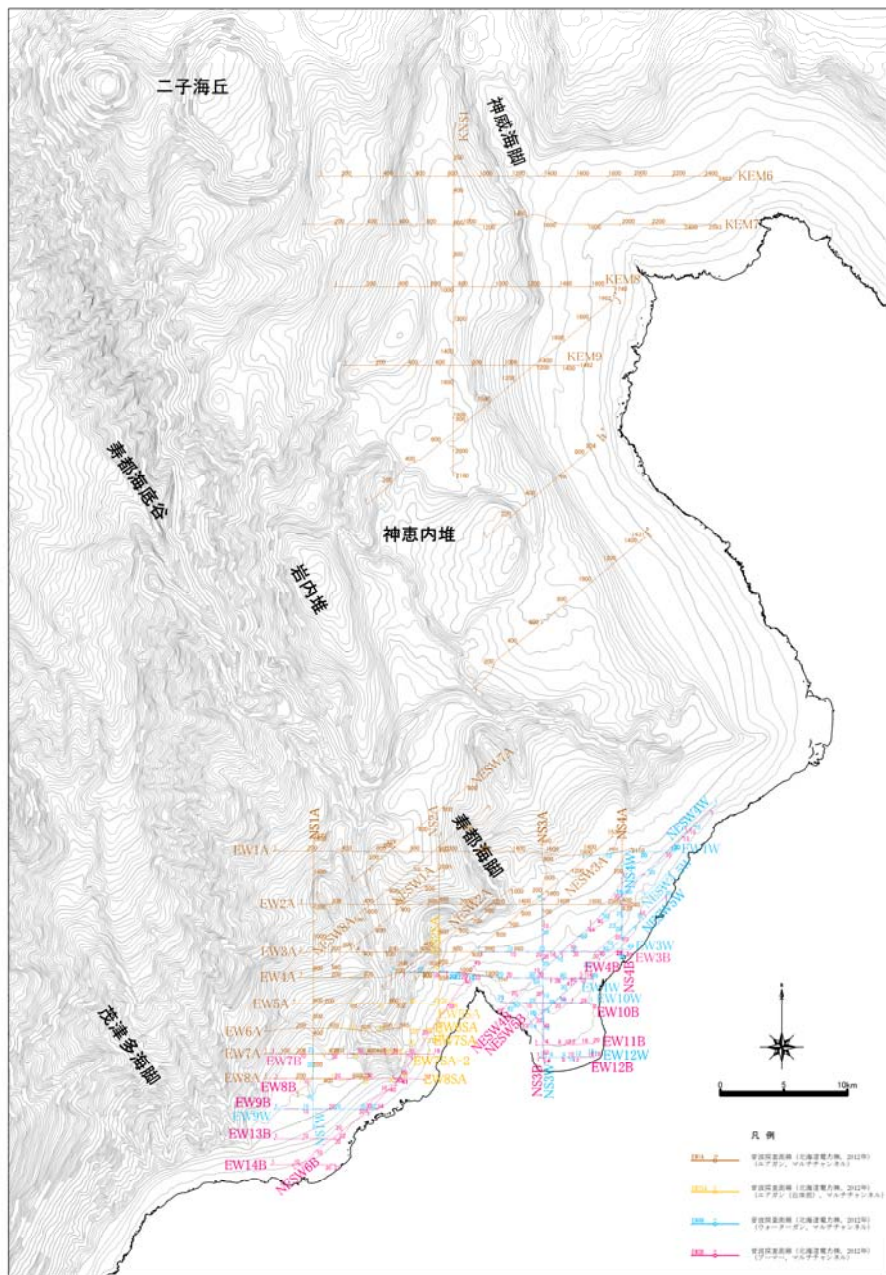


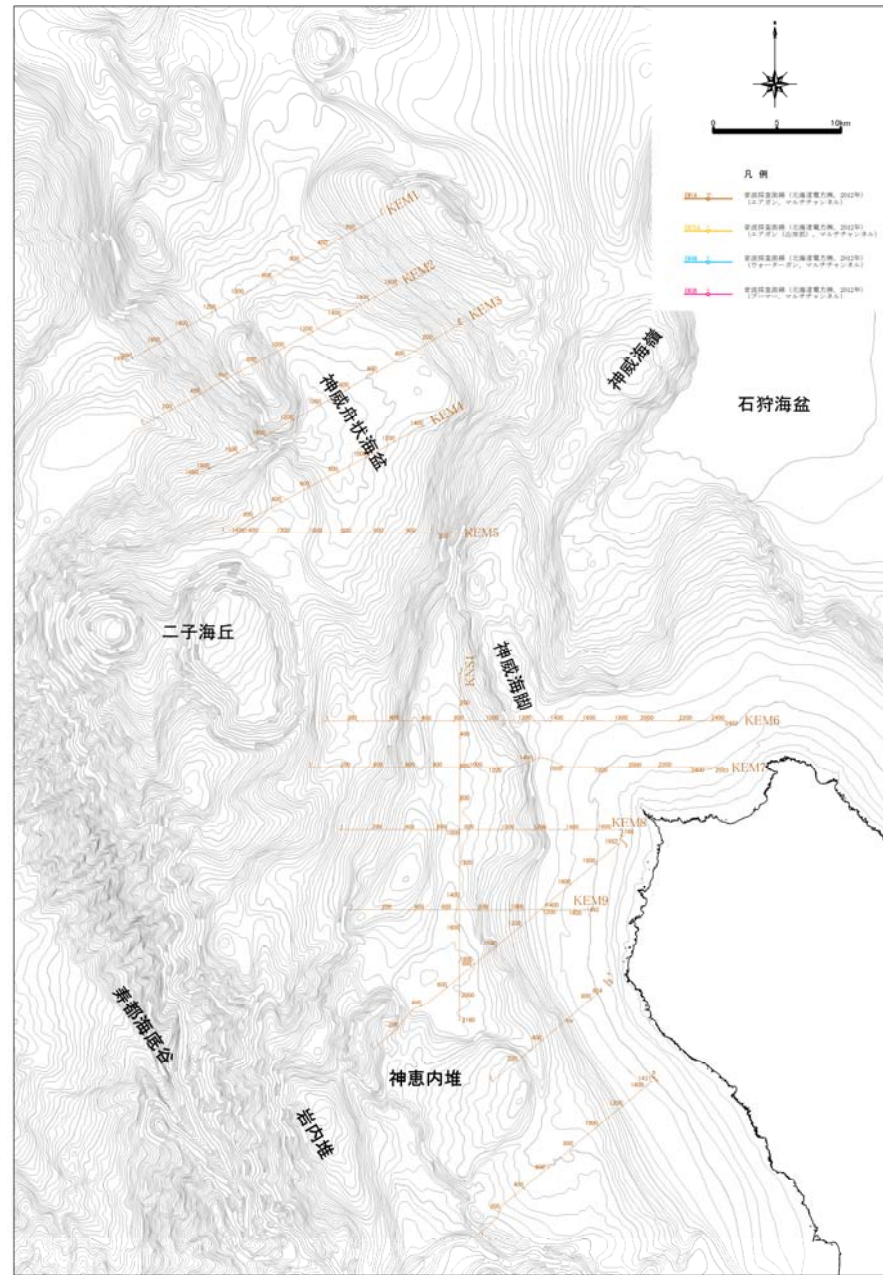
音波探査記録集

平成25年9月11日
北海道電力株式会社

1. 測線位置図



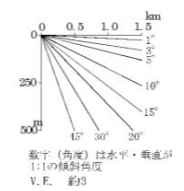
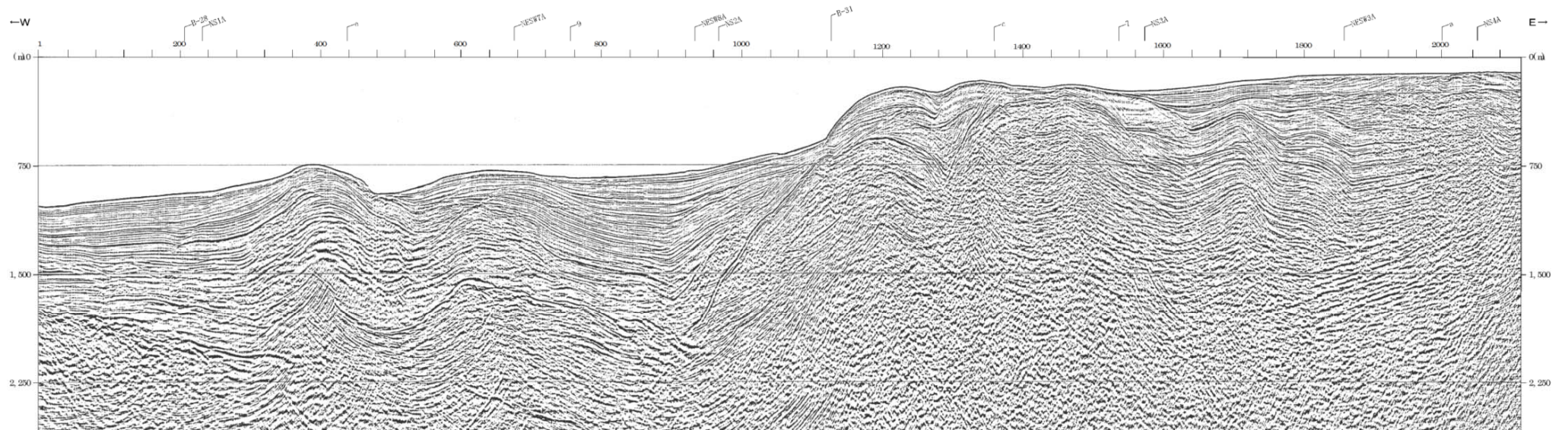
測線位置図1



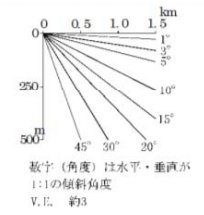
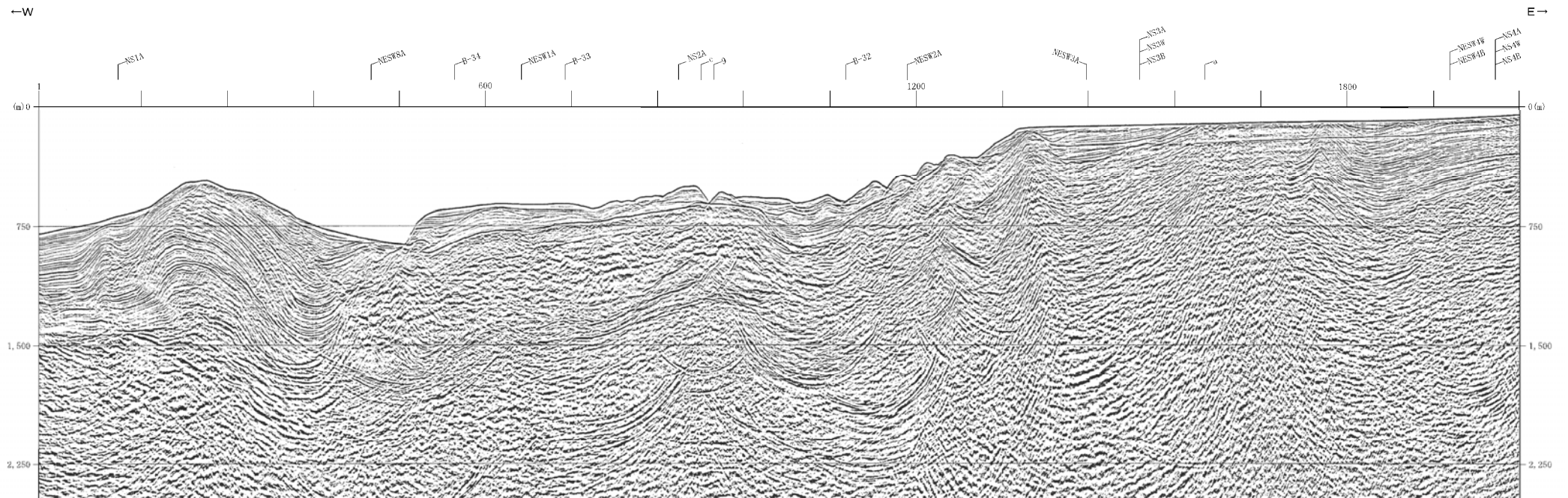
測線位置図2

2. エアガンマルチチャンネル音波探査

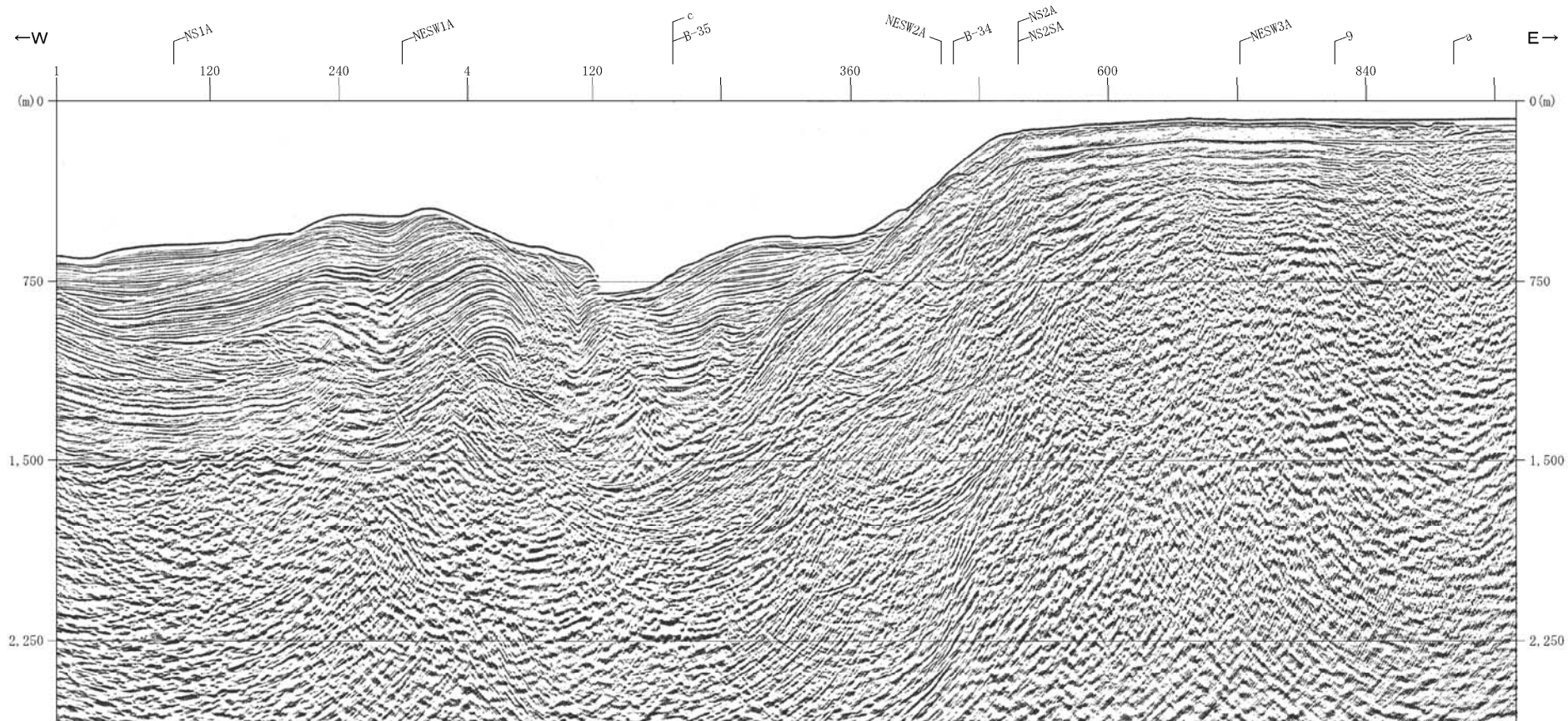
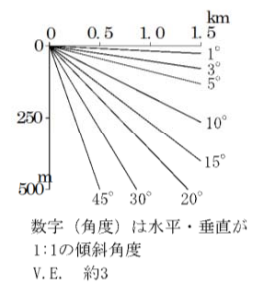
測線EW1A



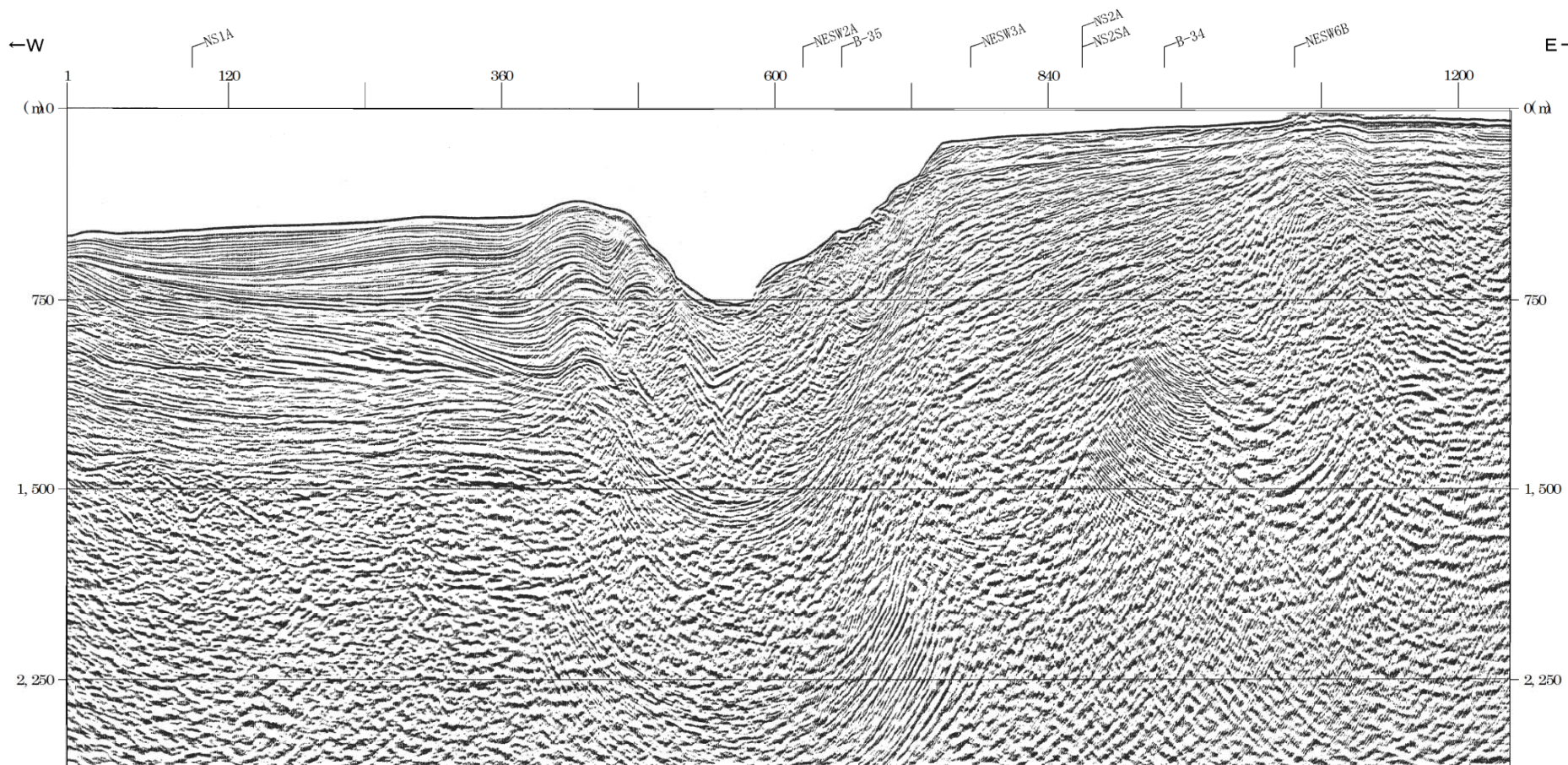
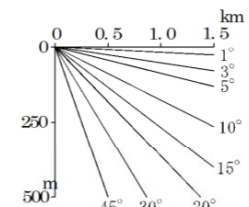
測線EW2A



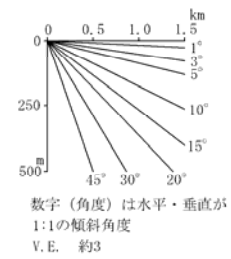
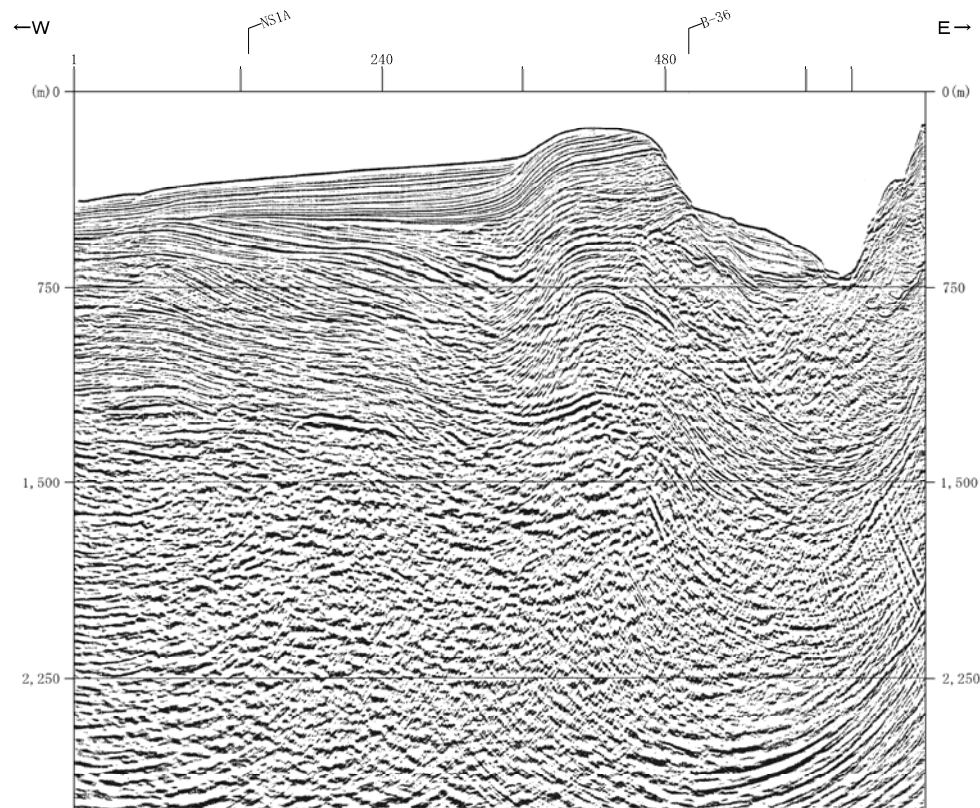
測線EW3A



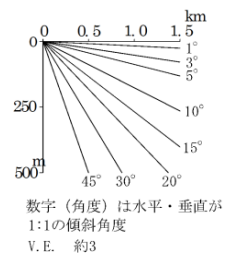
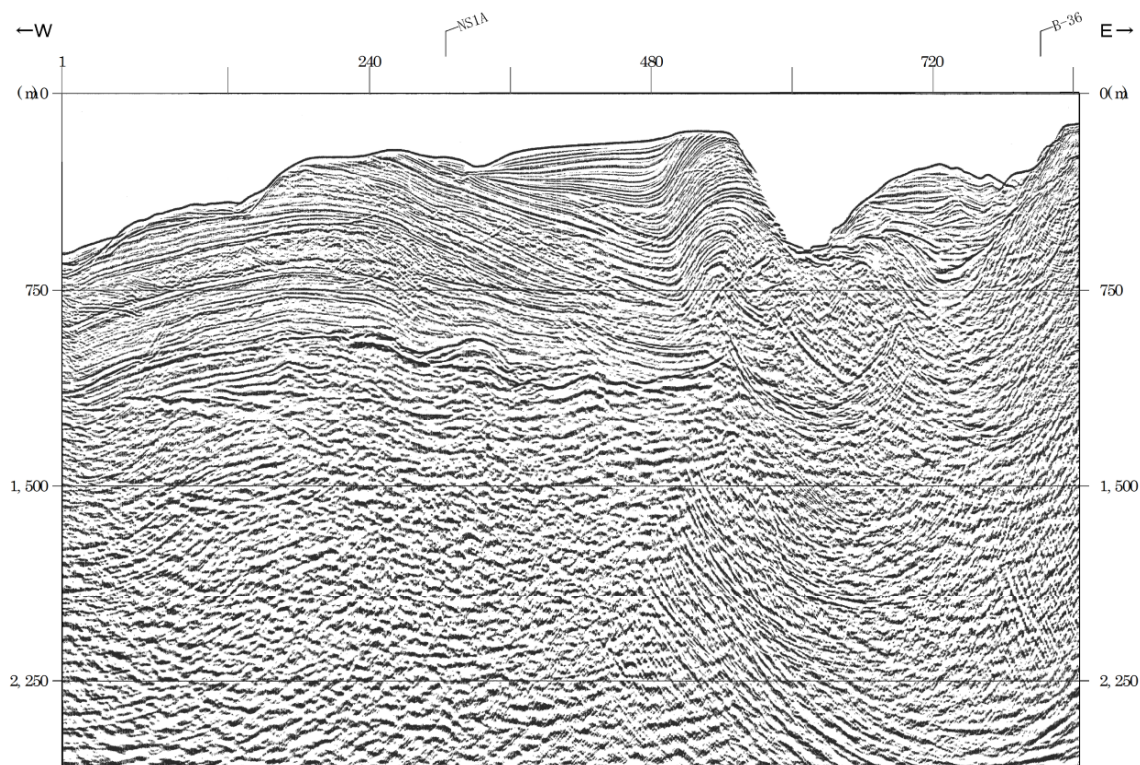
測線EW4A



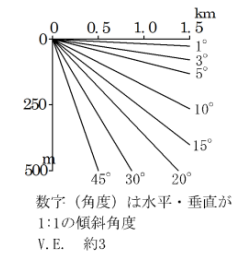
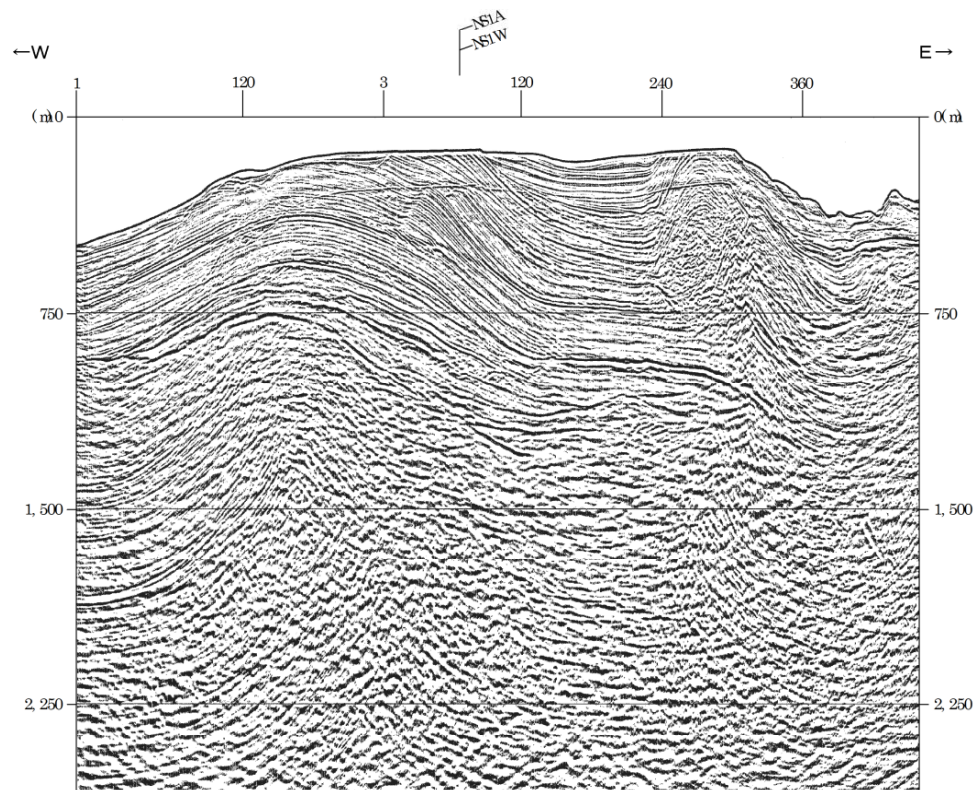
測線EW5A



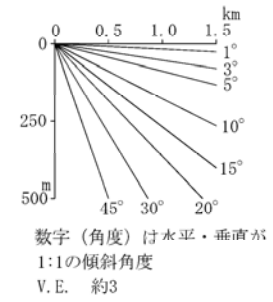
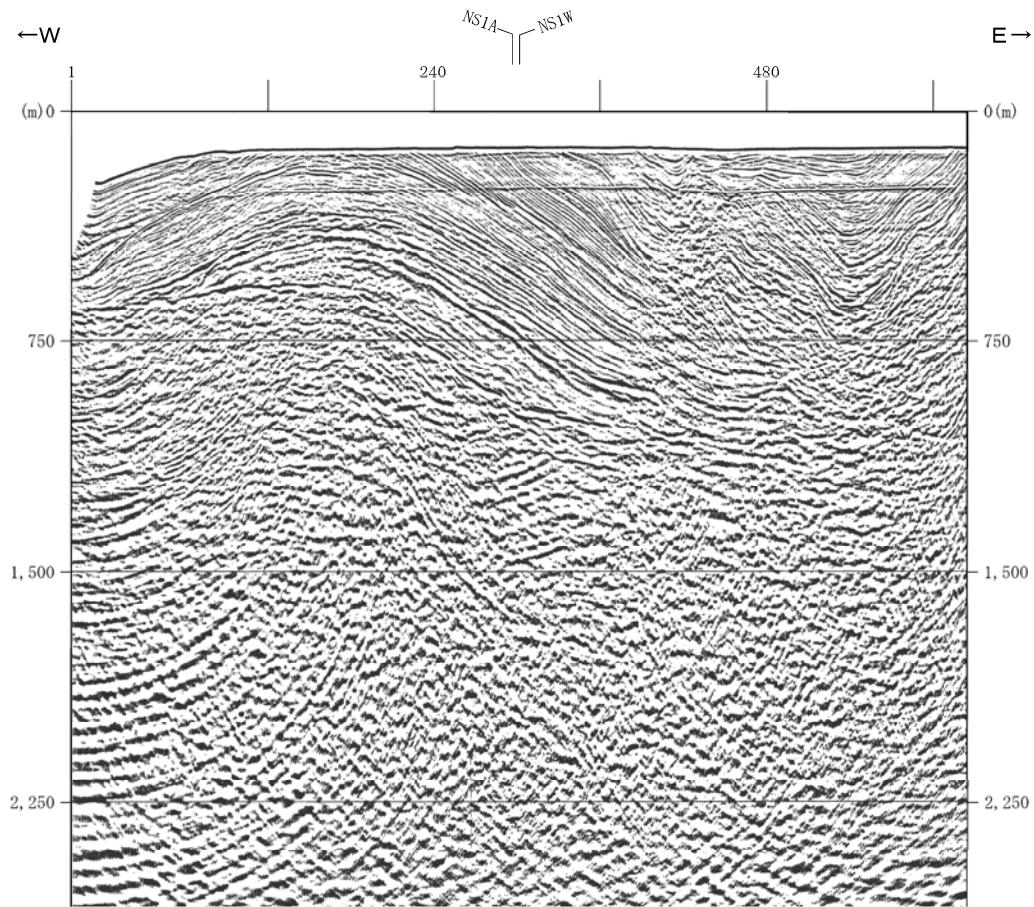
測線EW6A



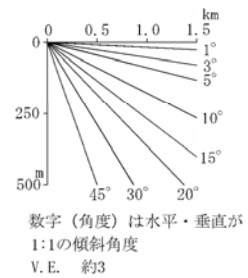
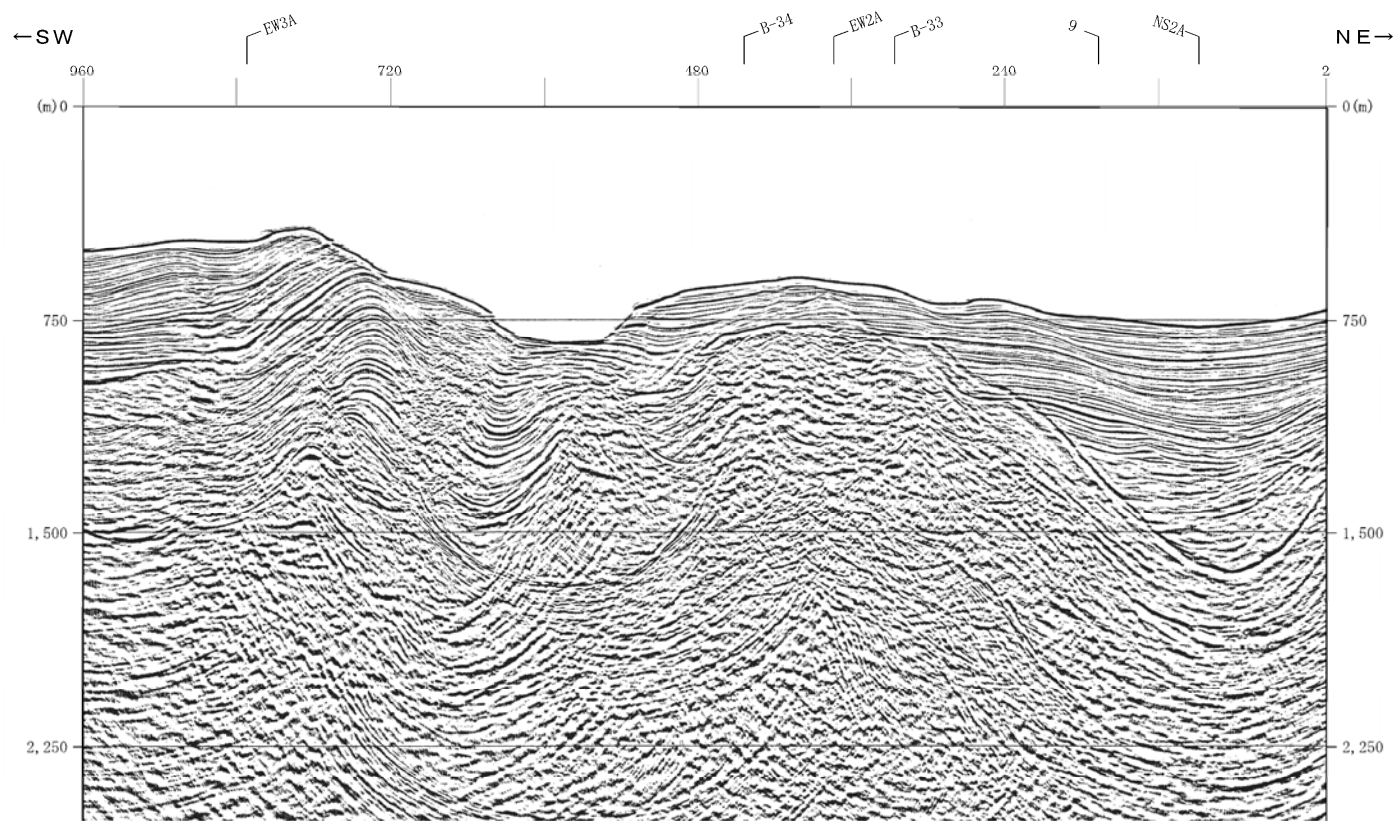
測線EW7A



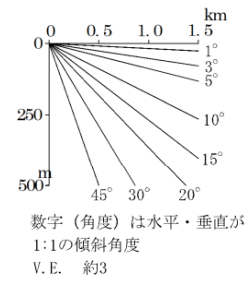
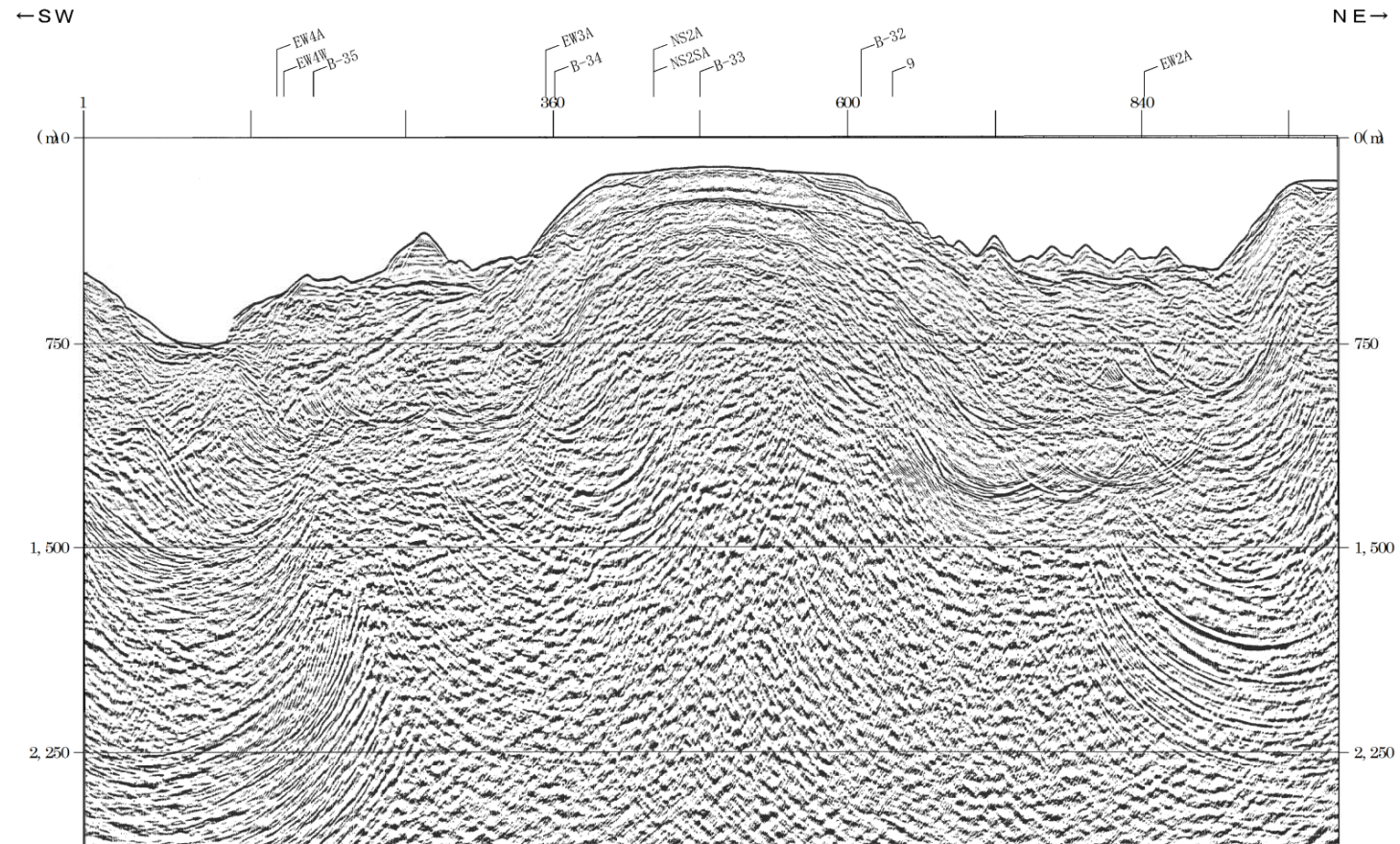
測線EW8A



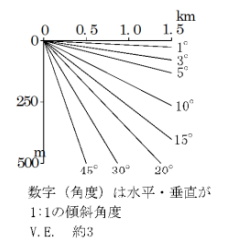
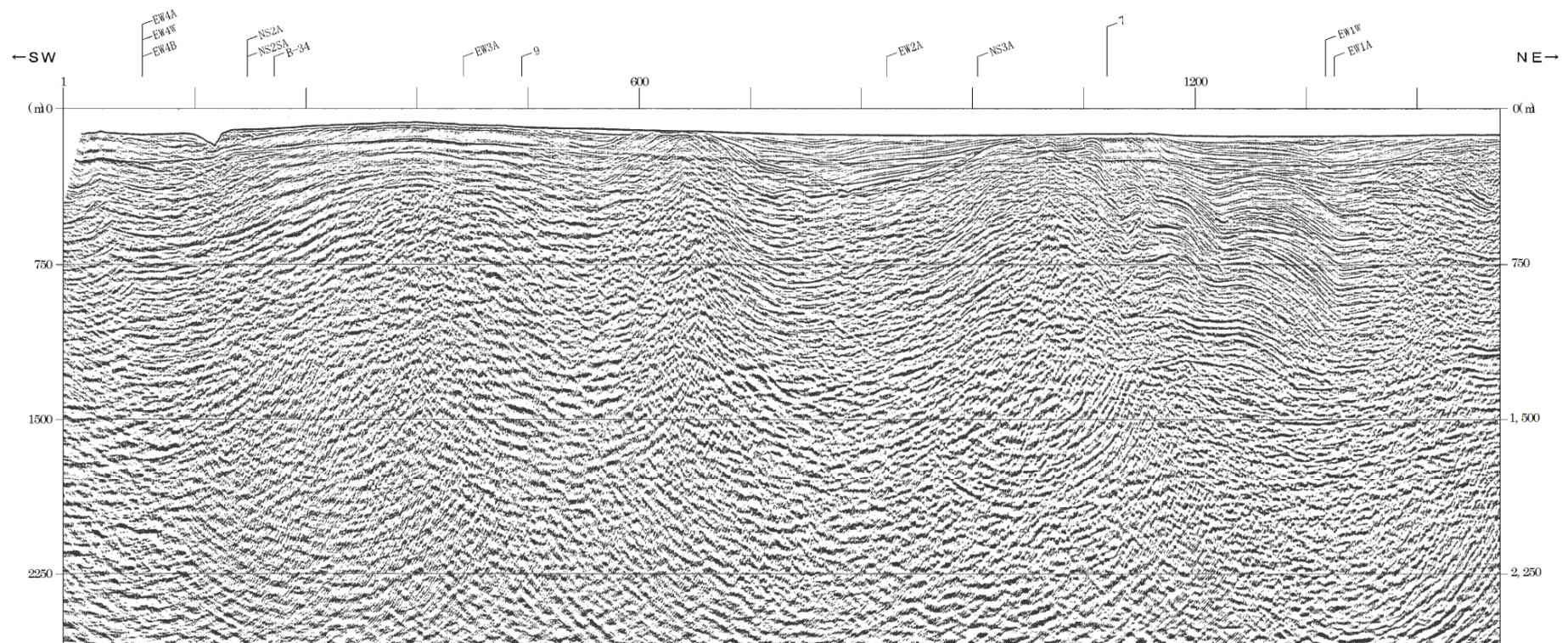
測線NE SW 1 A



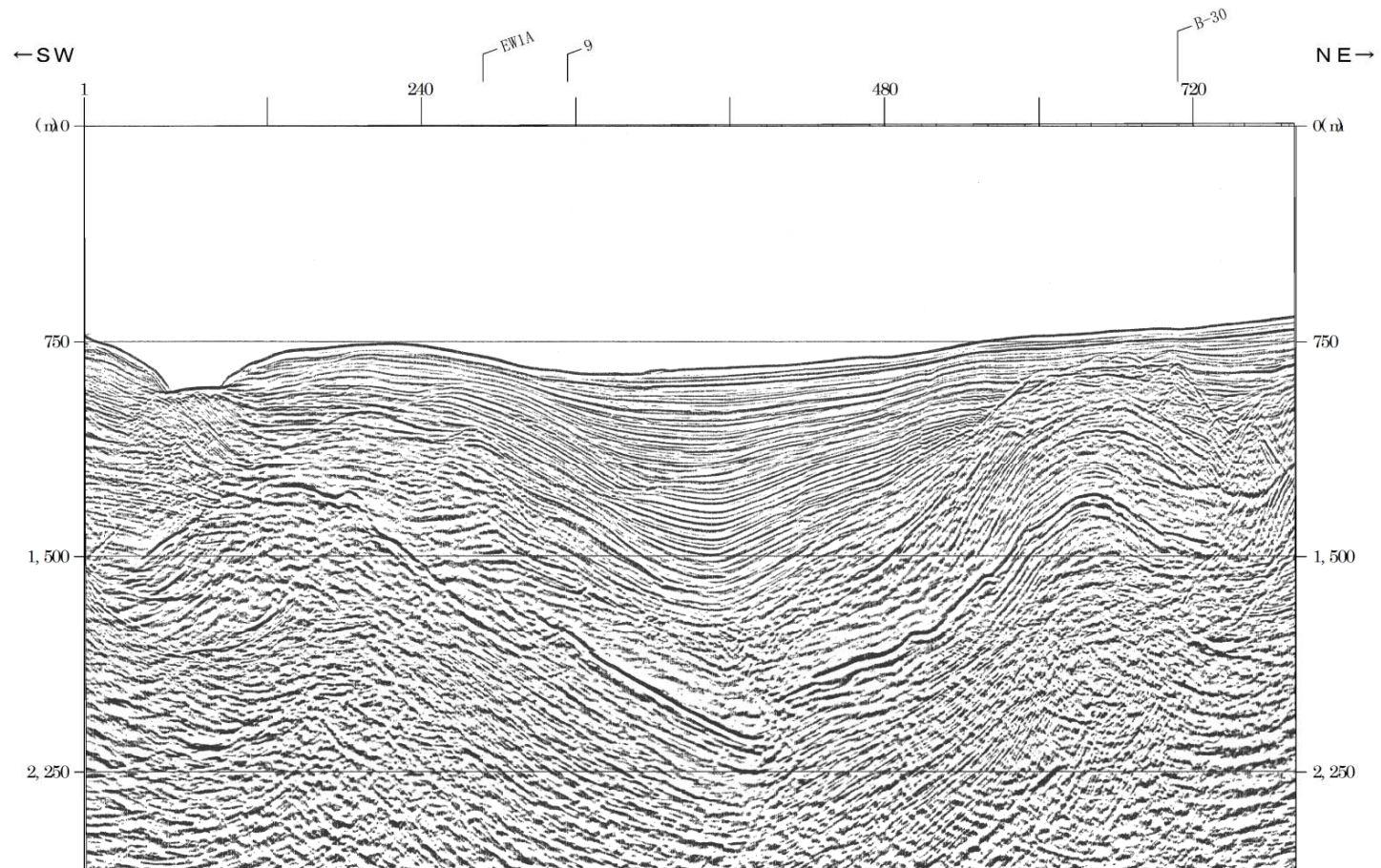
測線NE SW 2 A



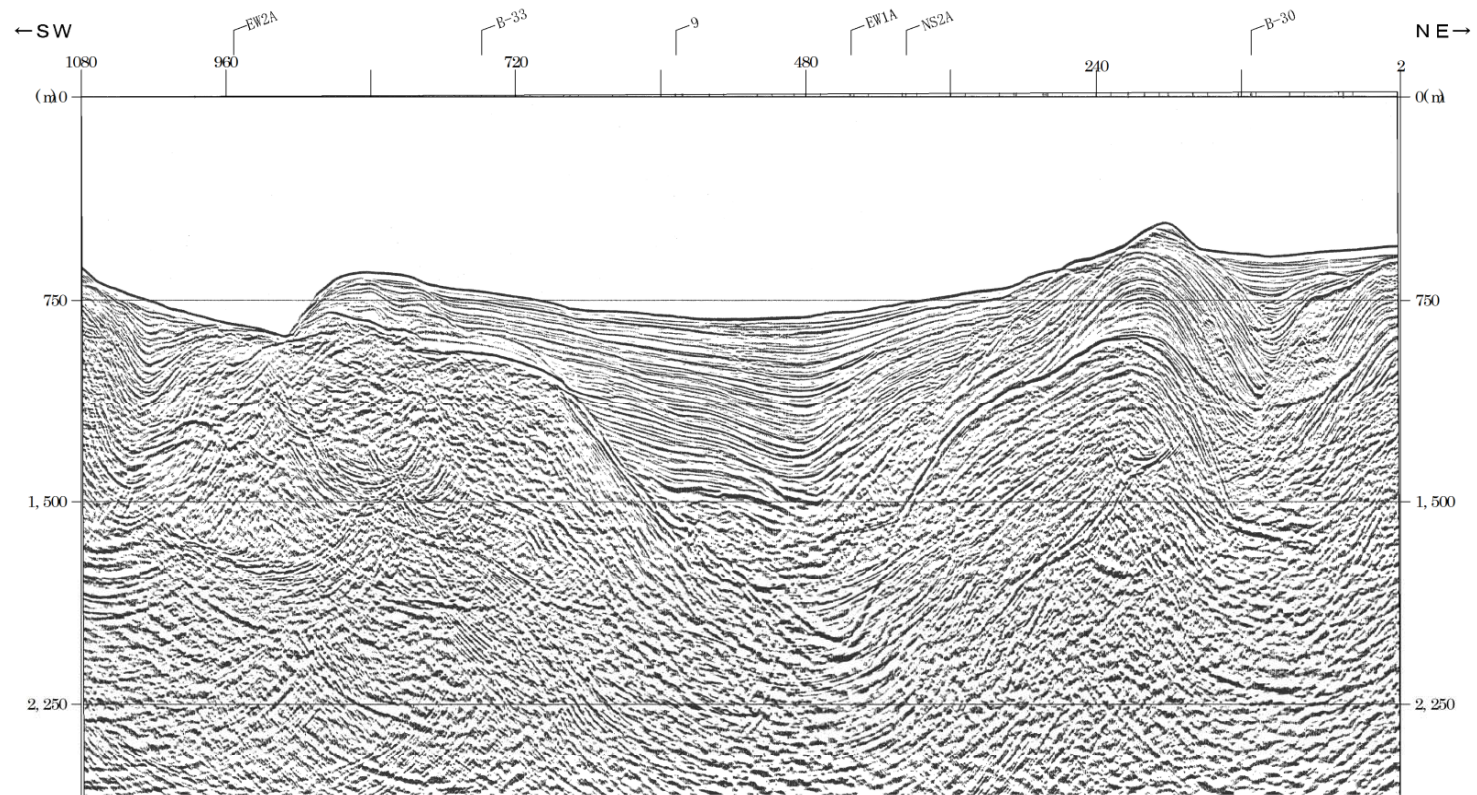
測線NE SW 3 A



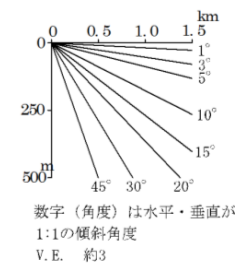
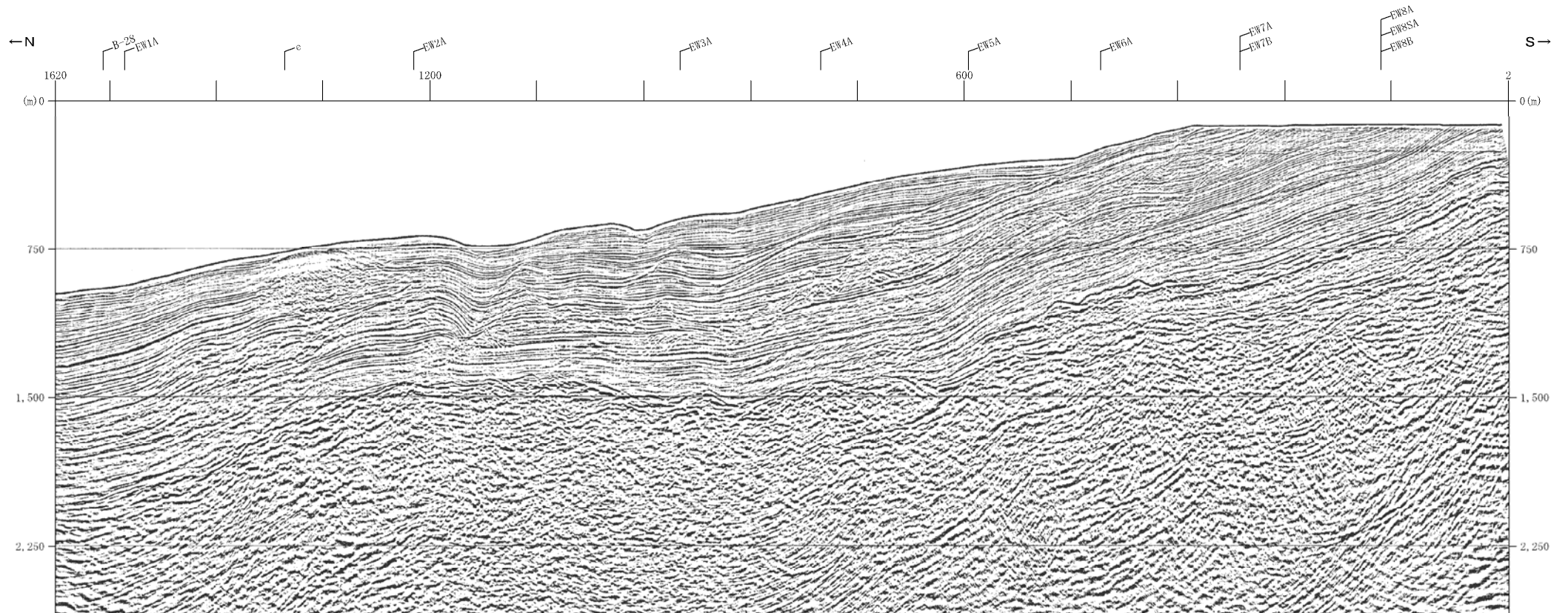
測線NE SW 7 A



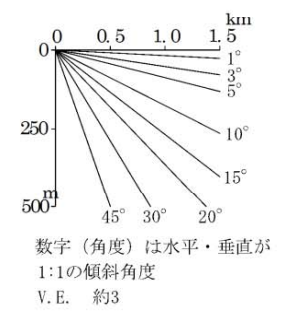
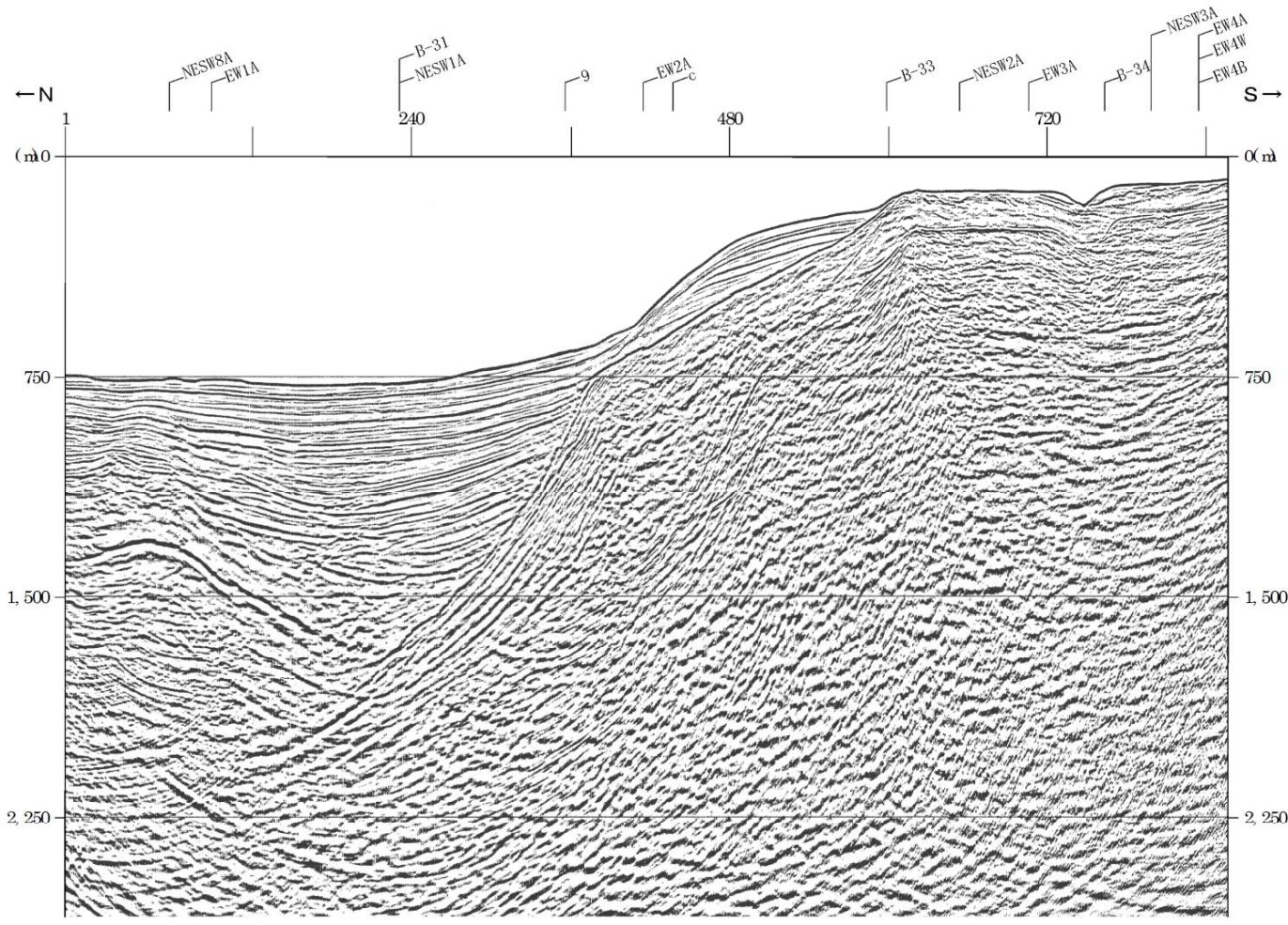
測線NE SW 8 A



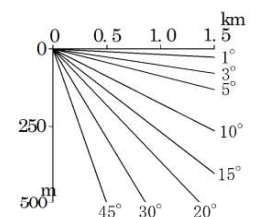
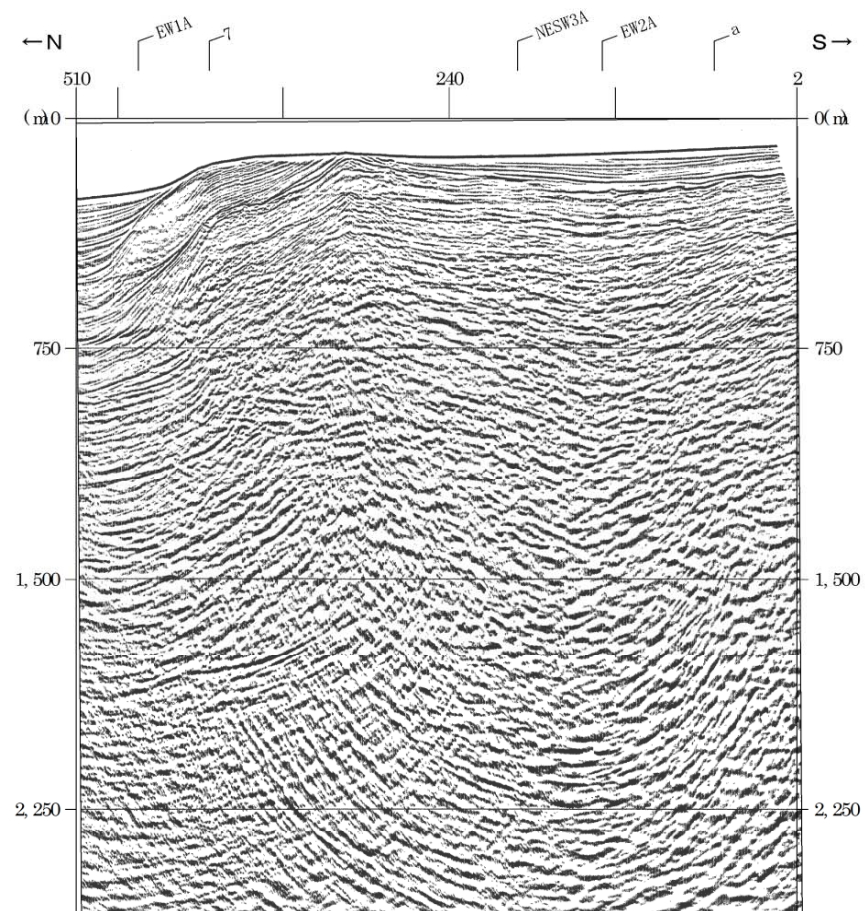
測線NS1A



測線NS2A

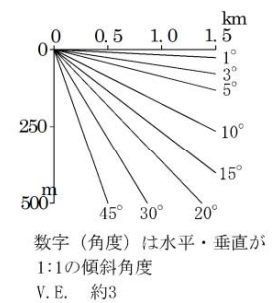
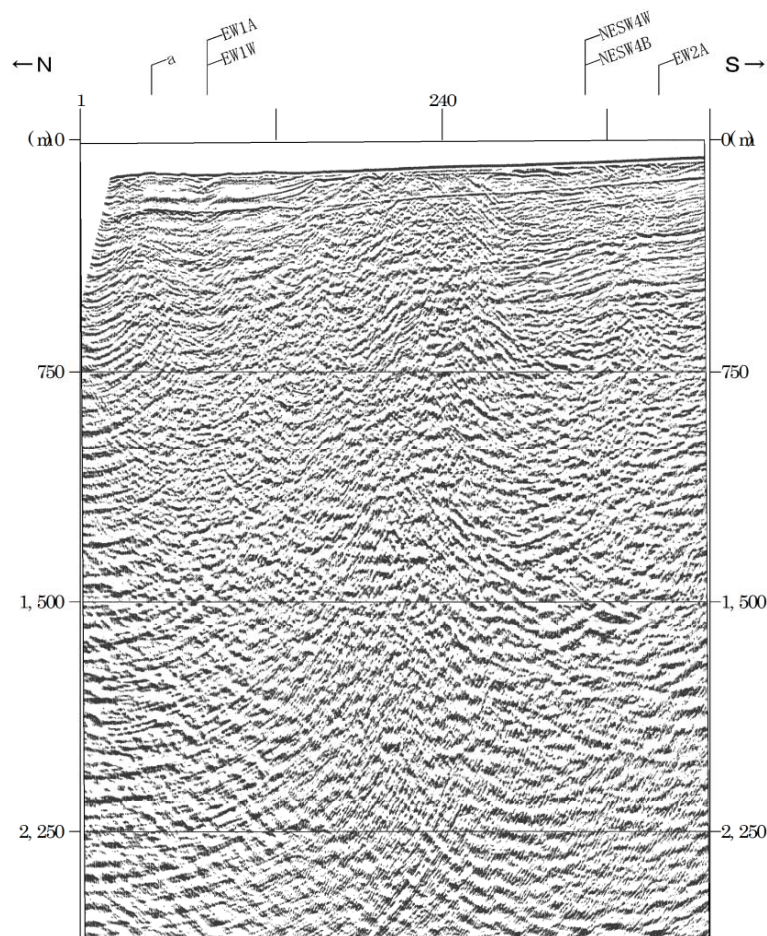


測線NS3A

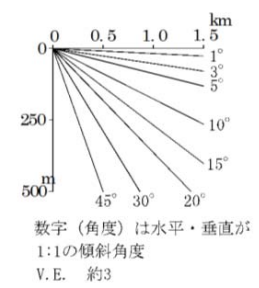
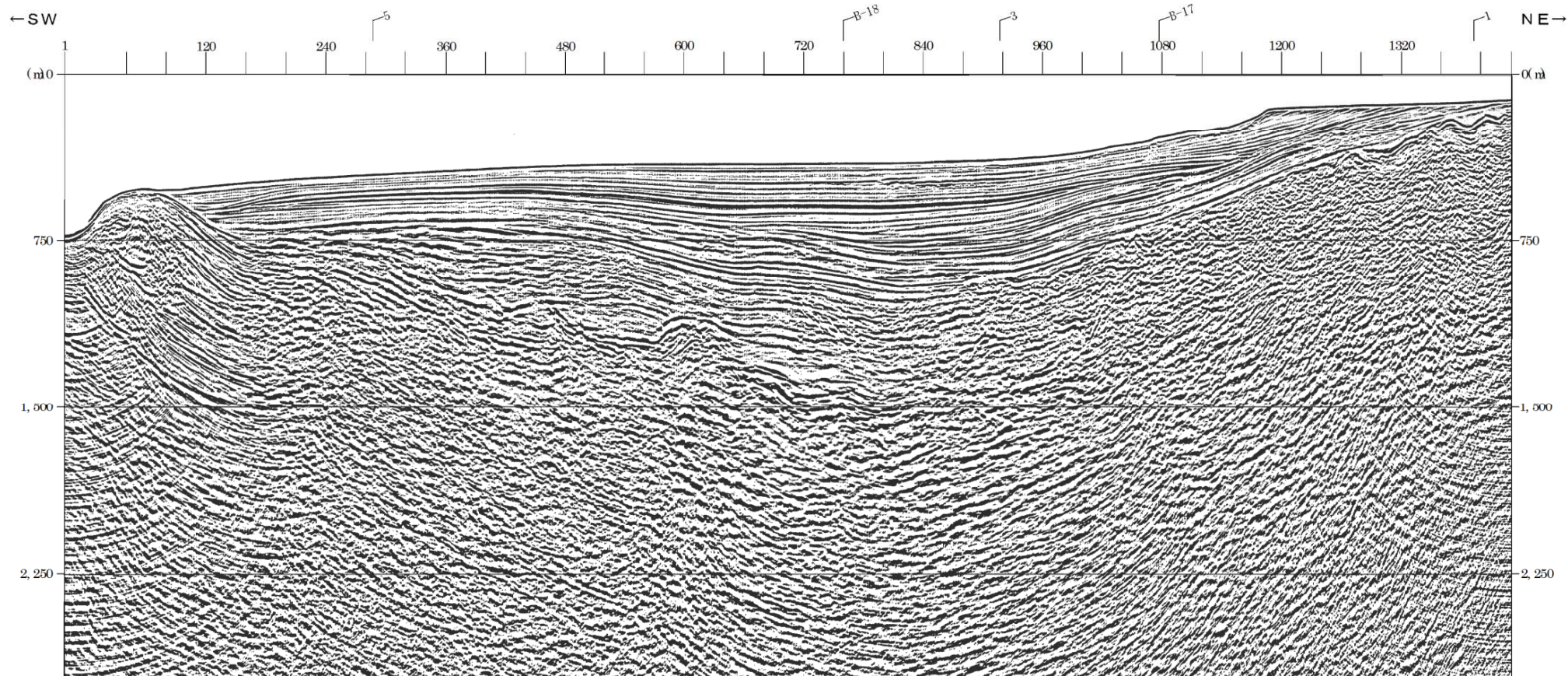


数字 (角度) は水平・垂直が
1:1の傾斜角度
V.E. 約3

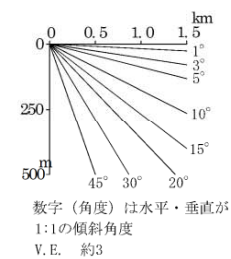
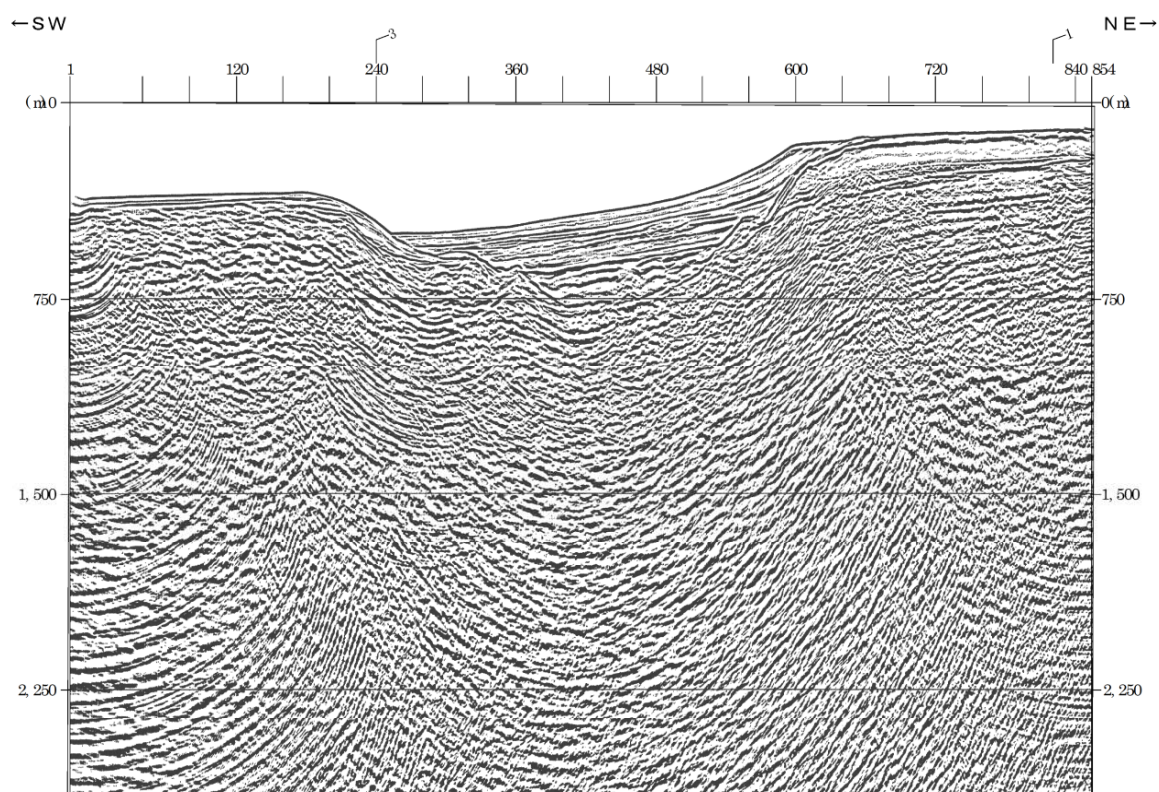
測線NS 4 A



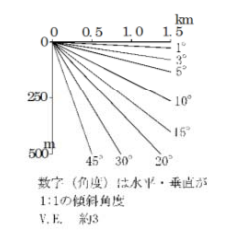
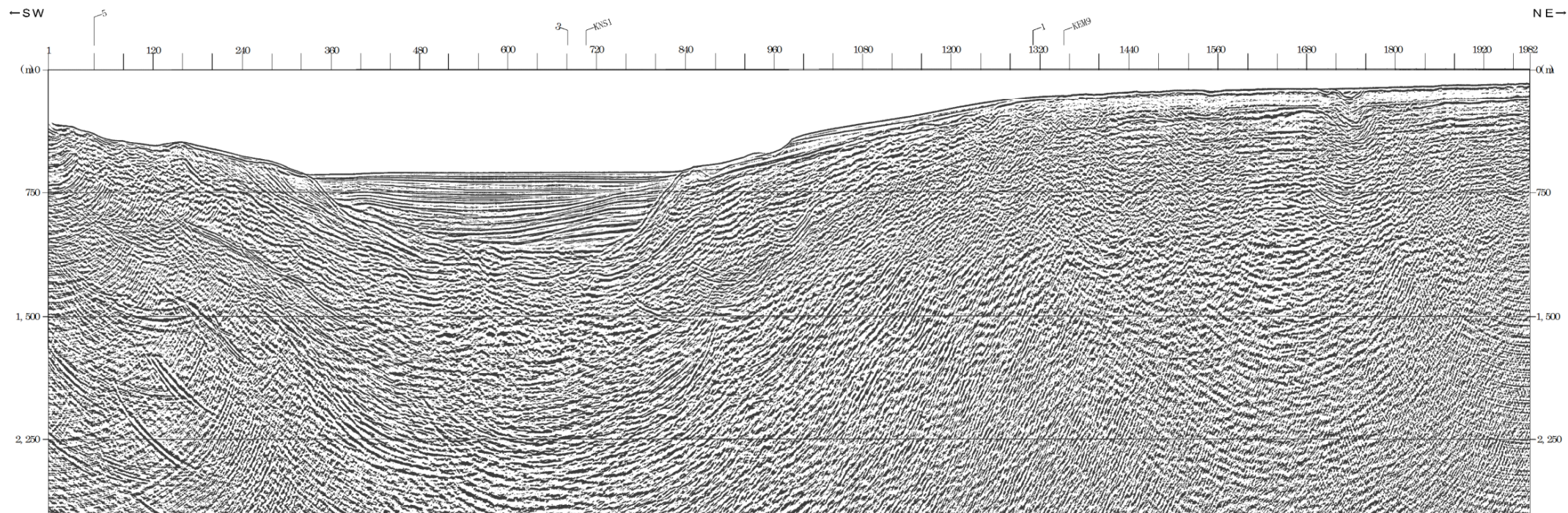
測線 f'



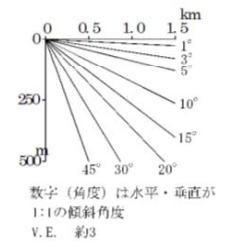
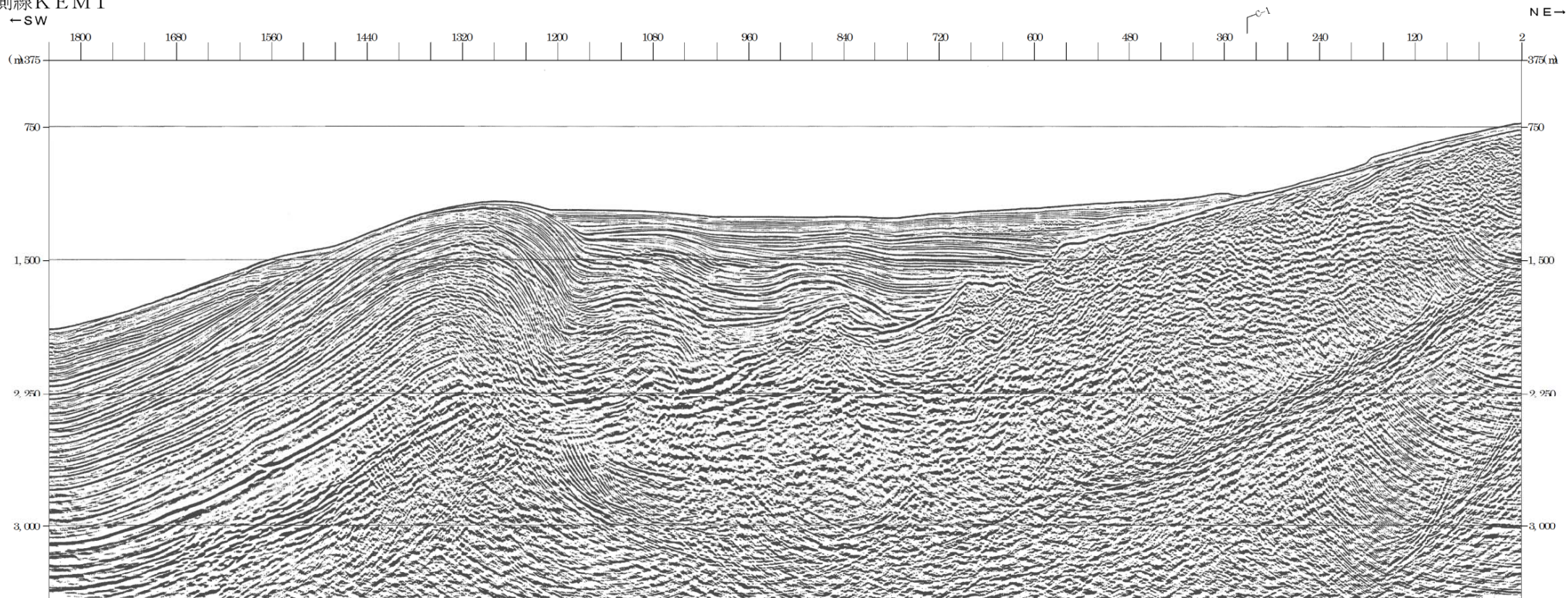
測線 h'



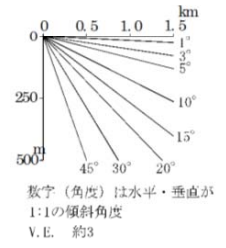
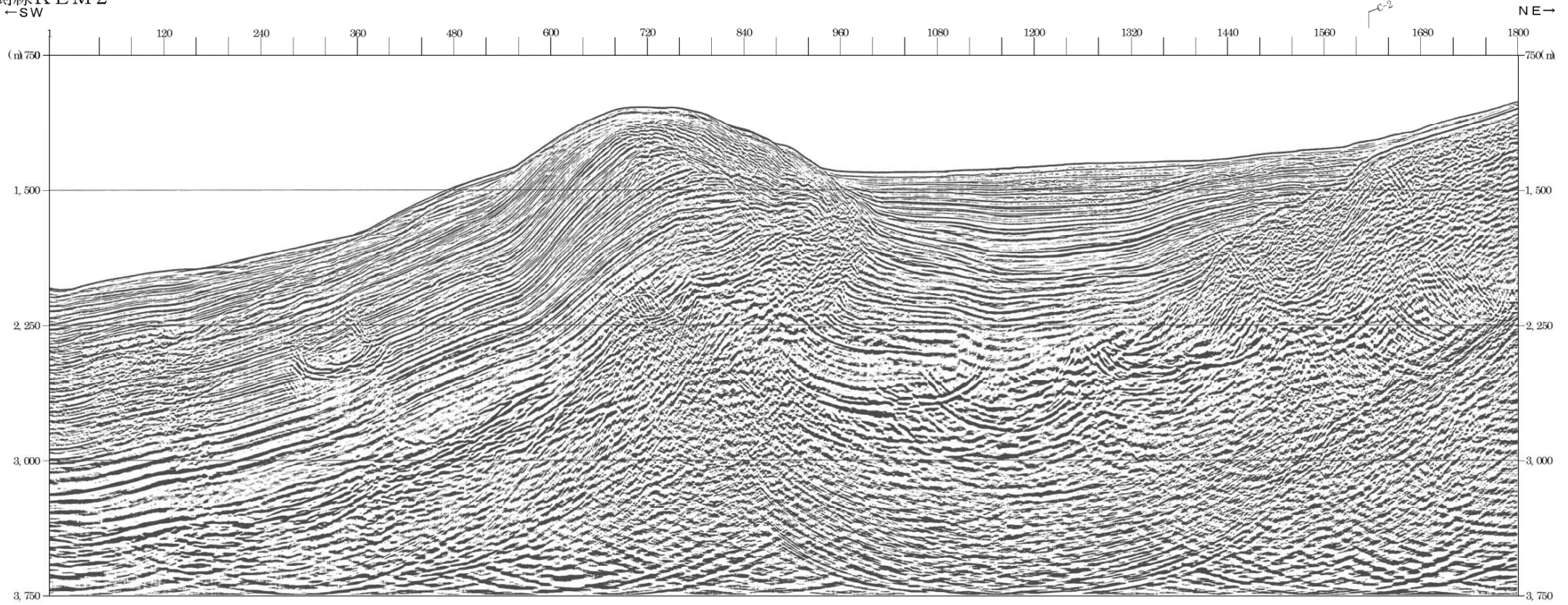
測線 j'



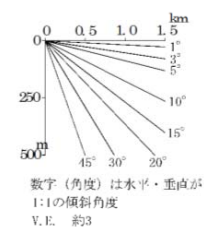
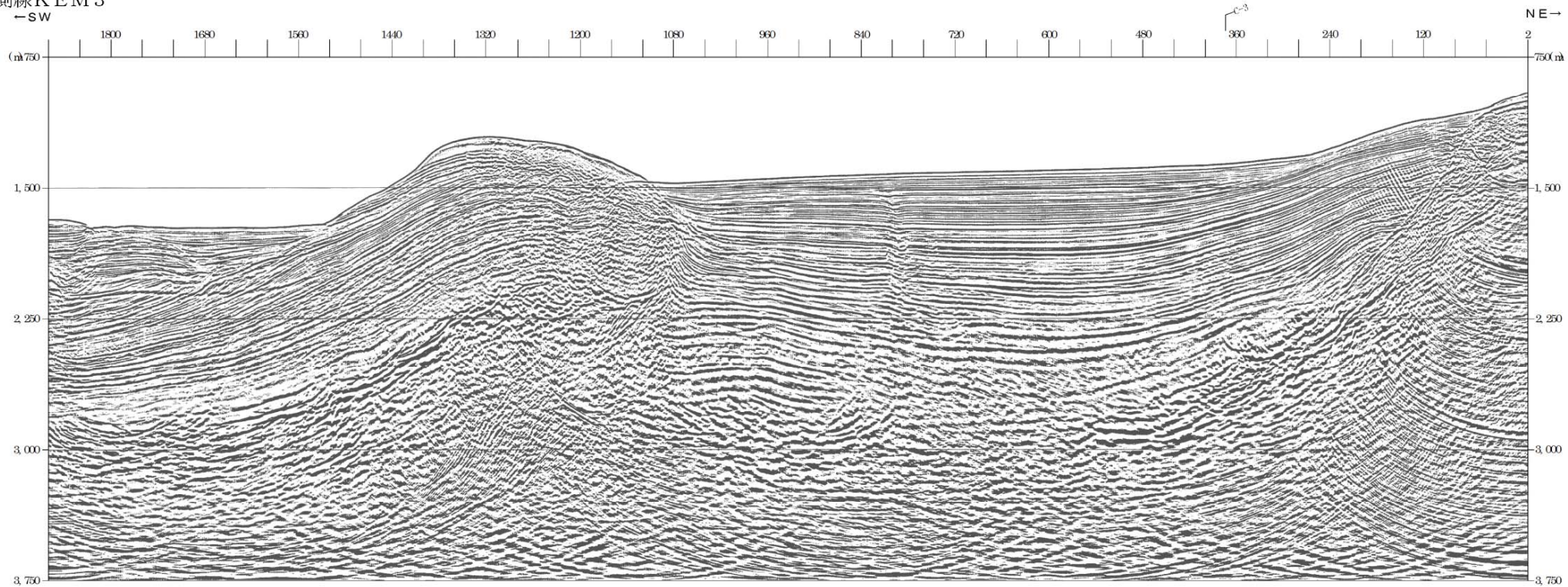
測線KEM1
←SW



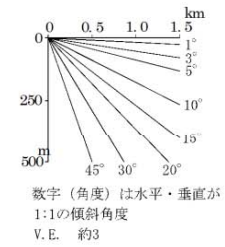
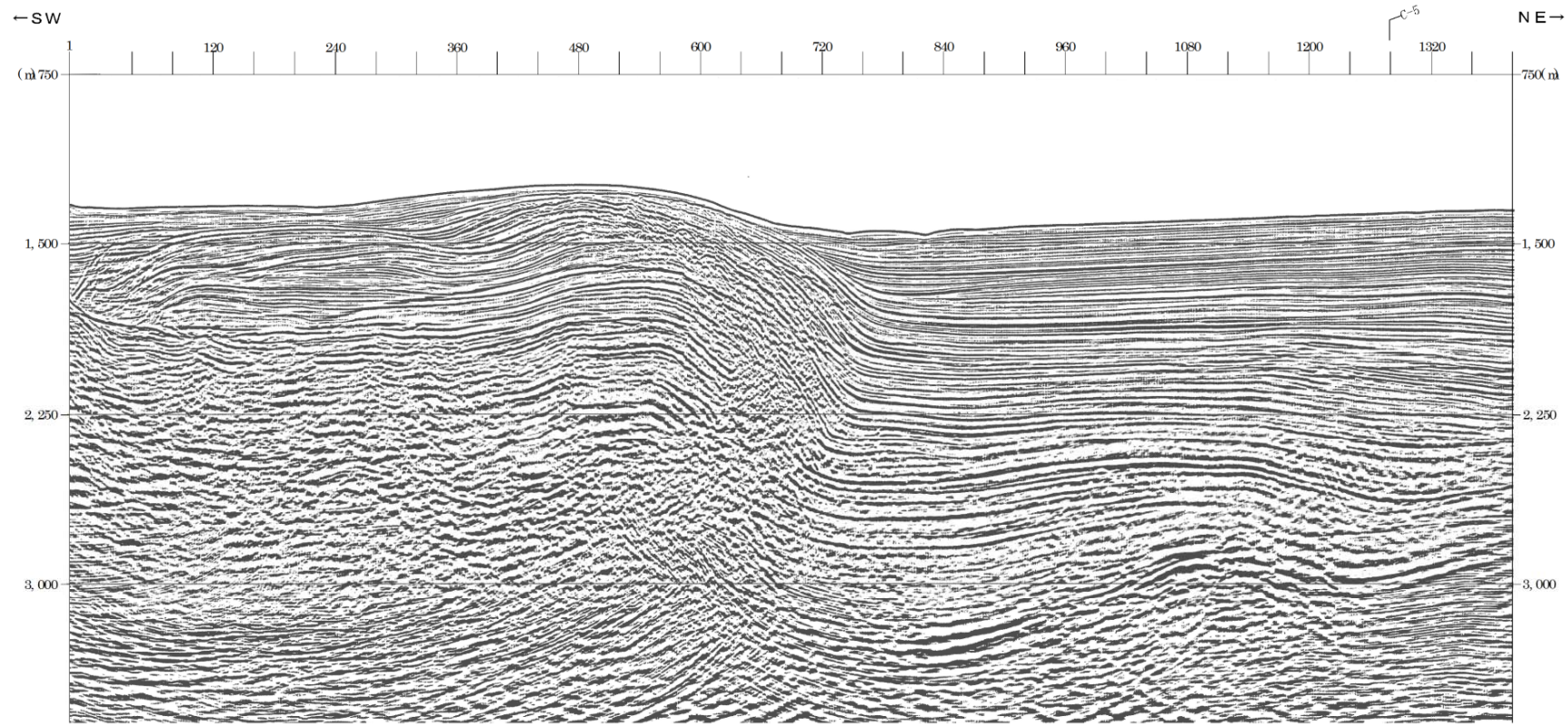
測線KEM2
←SW



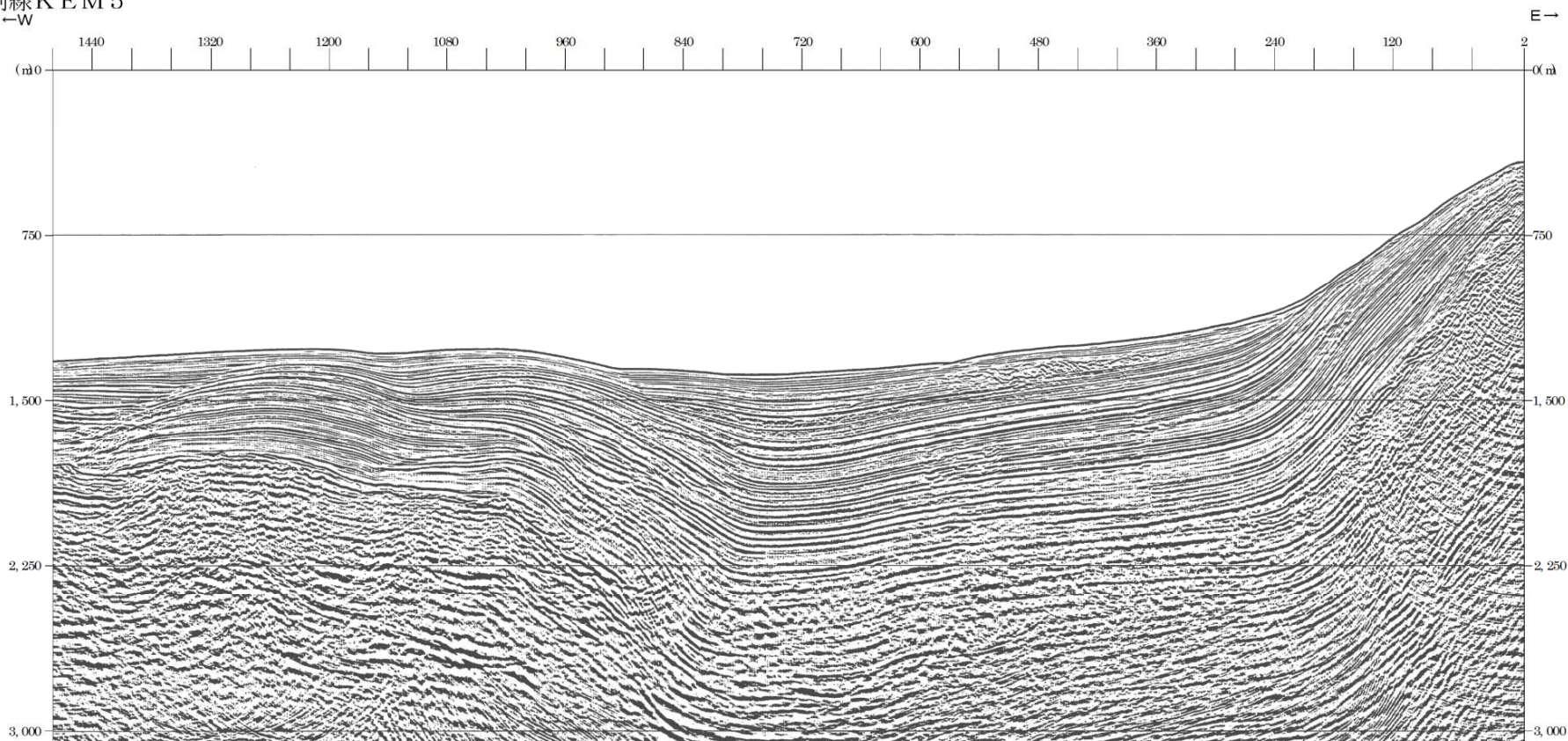
測線KEM3
-SW



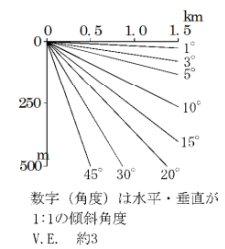
測線KEM4



測線KEM5
←W

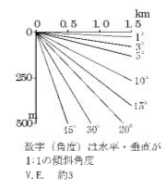
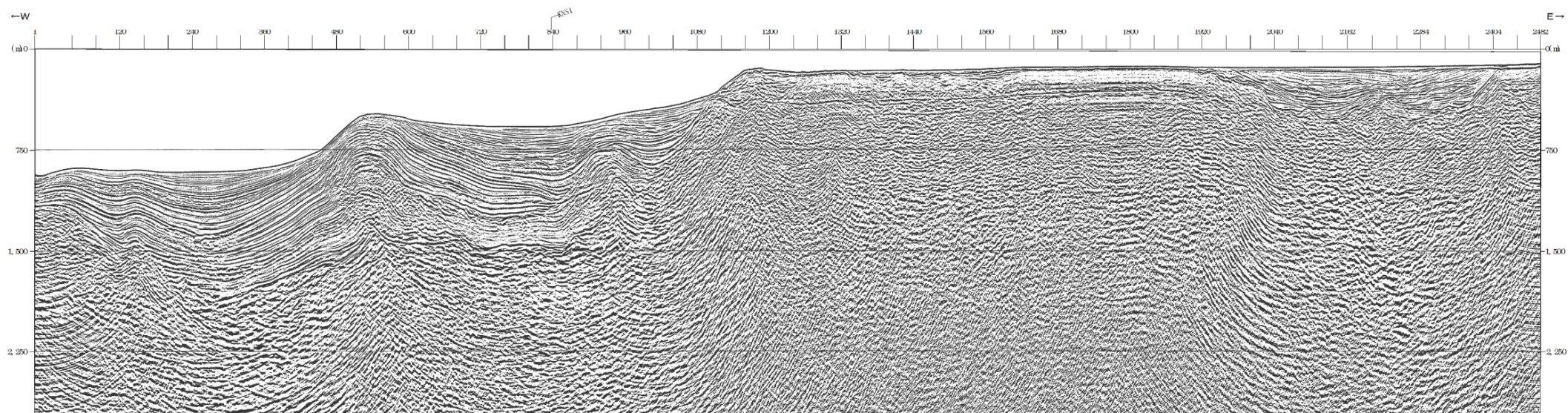


E→

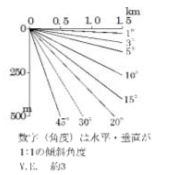
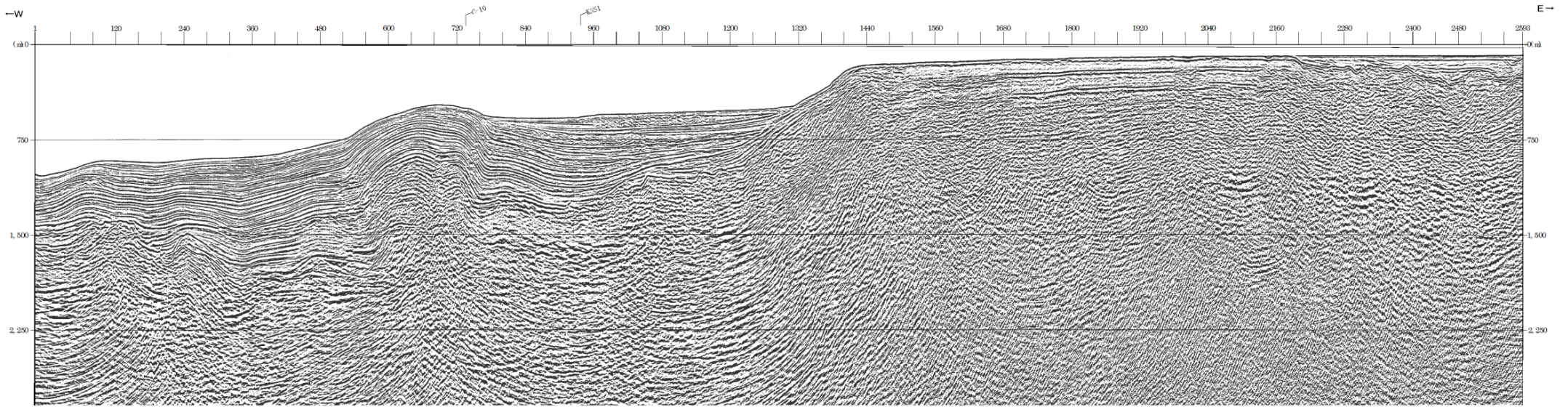


数字(角度)は水平・垂直が
1:1の傾斜角度
V.E. 約3

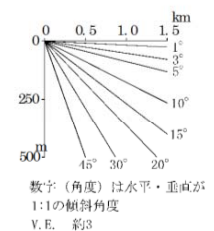
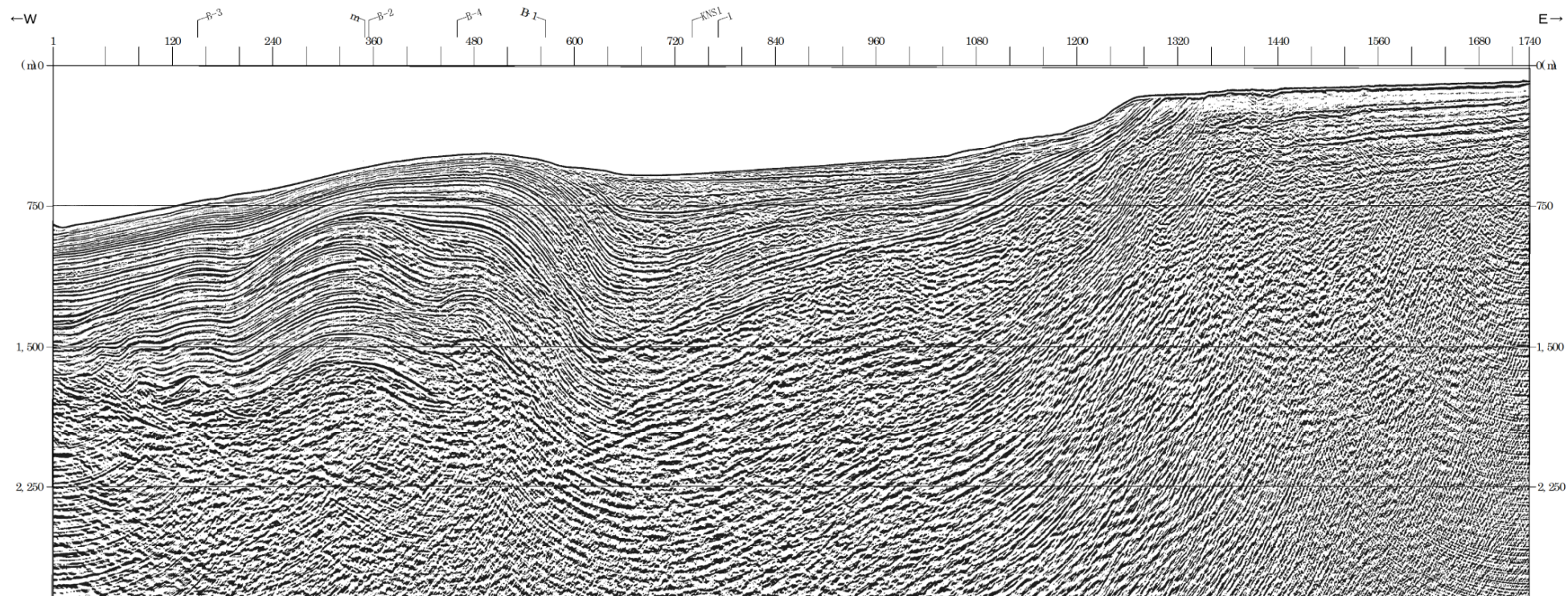
測線KEM6



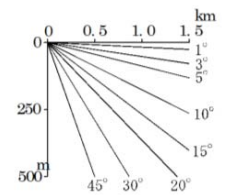
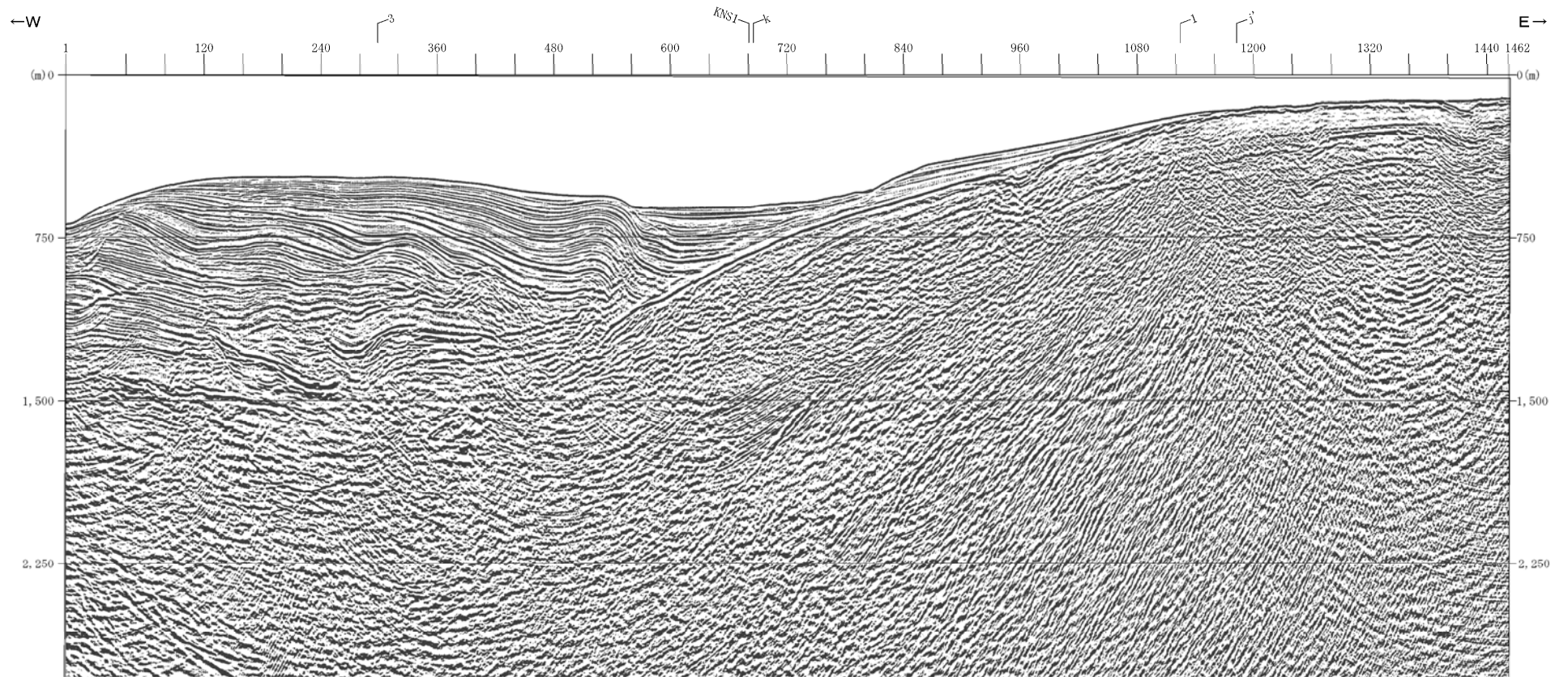
測線KEM7



測線KEM8



測線KEM9



数字 (角度) は水平・垂直が
1:1の傾斜角度
V.E. 約3

測線KNS 1

